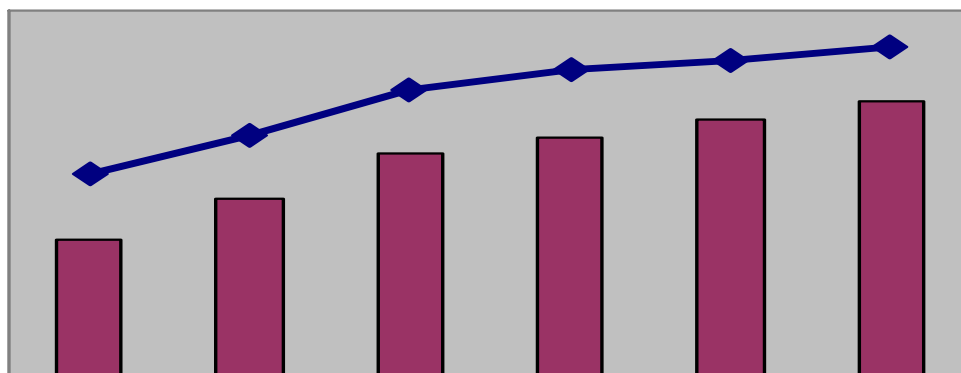


# MONTHLY FISCAL-MACRO UPDATE

AUGUST, 2008



*Prepared by:*  
*Economic Adviser's Wing*  
*Finance Division*

*This issue is contributed by*  
*Md. Habibur Rahman, Senior Assistant Secretary, Finance Division*  
*Dipak Kumar Sarkar, Senior Assistant Chief, Finance Division.*

*Guided by:*  
*Dr. Mohammad Tareque*  
*Secretary*  
*Finance Division*  
*Ministry of Finance*

Issue-6, Year: 2008

As on October 25, 2008

**A. FISCAL SECTOR**

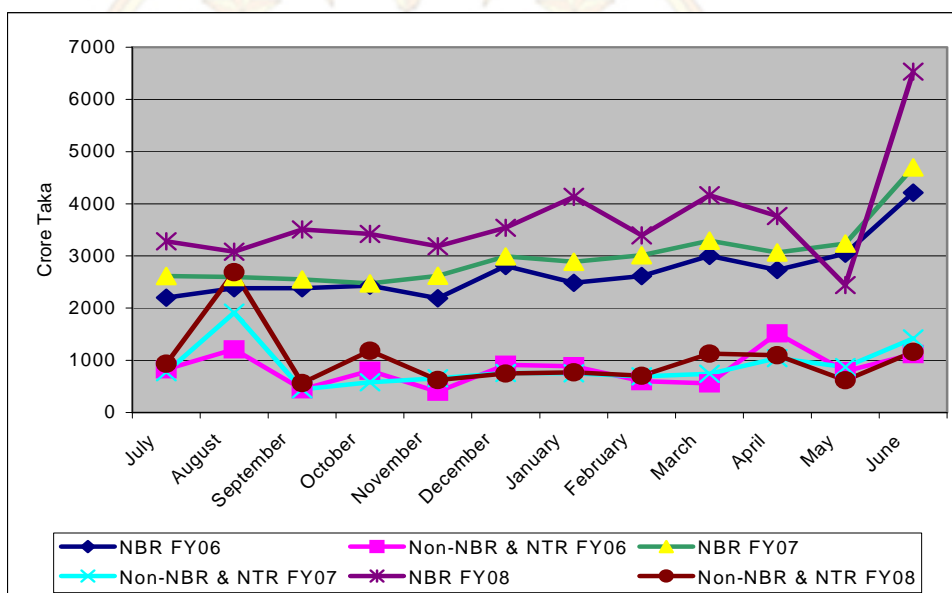
**a.1 Revenue Earnings**

(in crore Tk.)

Fiscal Year	Tax Revenue		Non-Tax Revenue	Total Revenue
	NBR	Non-NBR		
2005-06	32437.8	1526.1	8552.6	42516.6
2006-07	36172.1	1854.7	8779.7	46806.6
Growth (%)	11.5	21.5	2.7	10.1
2007-08				
June	6534.0	287.0	874.0	7695.0
July- June	45777.0	2313.0	10080.0	58170.0
(Growth over July- June FY 07)	(26.6%)	(24.7%)	(14.8%)	(24.3%)

Source: Integrated Budgeting & Accounting System (iBAS), Finance Division.

**Chart 1: Monthly Trend of Revenue earnings (FY06-FY08)**



- Up to June, FY08 strong growth in revenue (24.3%) continues.
- NBR Tax revenue growth up to June FY 08 is 26.6 percent.
- Non-NBR Tax revenue growth up to June FY 08 is 24.7percent.
- Dividend and profit mainly contributes growth (14.8%) in Non-Tax revenue.

**a.2 Grants**

(in crore Tk.)

2005-06	2006-07	Growth (%)	2007-08		
			June	July- June	Growth over July- June FY 07
1061.5	1037.4	-2.27	1382.1	2007.4	93.50%

Source: Integrated Budgeting & Accounting System (iBAS), Finance Division.

**a.3 Government Expenditure**

(in crore Tk.)

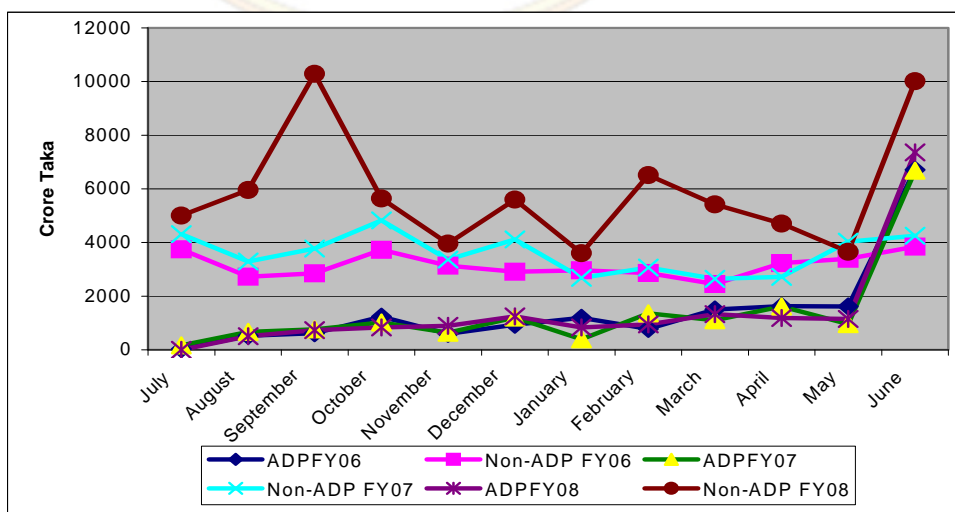
	2005-06	2006-07	Growth (%)	2007-08	
				June	July- June
1. Current	35122.0	40867.9	16.36	9257.0	49992.0 (22.34%)
Interest	7894.4	9403.4	19.11	1171.2	12461.9 (32.53%)
Domestic	6649.1	8063.1	21.27	1000.7	11063.4 (37.21%)
Foreign	1245.3	1340.3	7.63	170.5	1398.5 (4.34%)
Subsidies & Current Transfer	10574.3	12228.0	15.64	4812.9	17758.2 (45.23%)
2. ADP	17313.4	16833.0	-2.77	7357.4	17067.5 (7.60%)
3. Non-ADP Capital Exp. & Net lending	2089.8	2782.7	-81.12	1611.4	-5671.7 (-230.09%)
4. Net Outlay on Food A/C	488.0	388.0	-20.49	305.0	2192.0 (1401.37%)
5. Extraordinary Exp	79.3	32.2	-59.39	24.7	788.3 (2348.14%)
6. Check float	82.9	222.3	168.15	-1185.5	20452.8 (1635.9%)
Total (1+2+3)	55175.4	59932.0	8.62	17370.0	84821.1 (41.53%)

Source: Integrated Budgeting & Accounting System (iBAS), Finance Division. Figures in parentheses indicate growth over July- June, FY 07

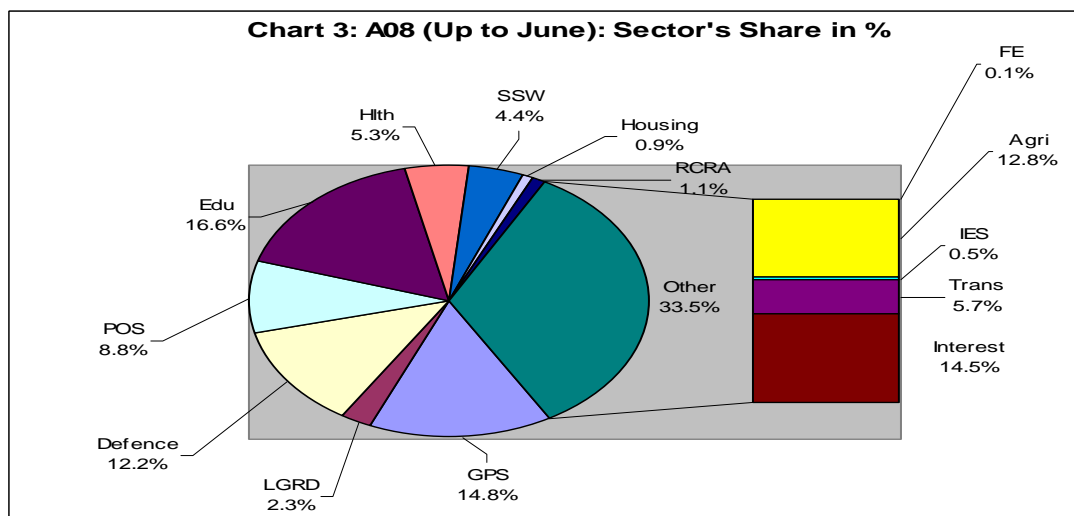
Up to June, FY 08,

- Current expenditure records strong growth (growth: 22.34 %), of which
  - Subsidies and transfer (growth: 45.23%)
  - Interest payments (growth: 32.53%).
- In FY 08 Net outlay on Food Account increases by 1401.37 percent which is reflective of huge food distribution programme implemented by the government

**Chart 2: Monthly Trend of ADP and Non-ADP Expenditure (FY 06-FY08)**



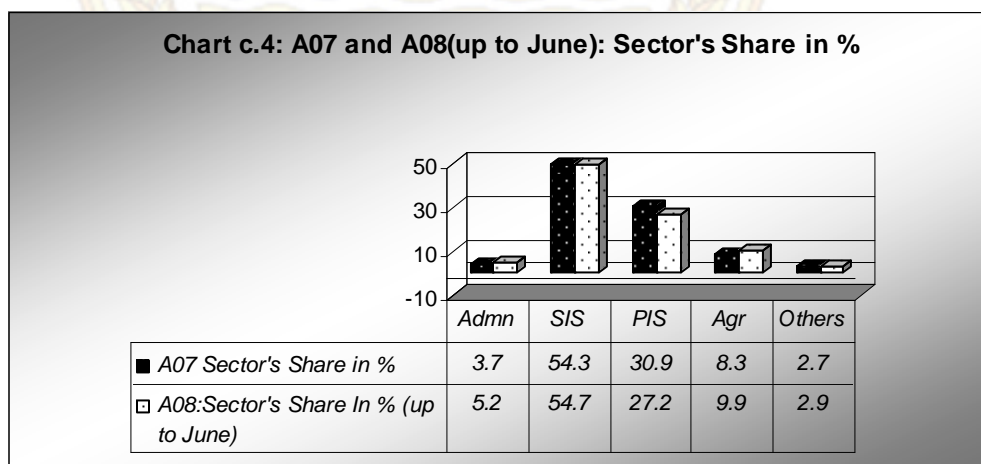
**a.3.1 Structure of Revenue Expenditure**



GPS = General Public Services, LGRD = LGD, RD & Cooperatives, CHTs, POS = Public Order and Safety, Edu = Education and Technology, Hlth = Health, SSW = Social Security and Welfare, RCRA = Recreation, Culture and Religious Affairs, Agri = Agriculture, Fisheries and Livestock, Land, Water Resources and Food, FE = Fuel and Energy, IES = Industries, Jute, Textiles, Commerce, Labor & Overseas, Trans = Transport and Communication

- Sector wise revenue expenditure shows that highest expenditure is in Education (16.6%), General Public Services (14.8%) and Interest payment (14.5%).

**a.3.2 Structure of ADP Expenditure**



Admn = General Public Services, Defence, and Public Order and Safety, SIS = Social Infrastructure, covers Edu, health, Housing and SSW & LGRD. PIS = Physical Infrastructure, covers FE and Trans; and Others include RCRA and IES

- Sector wise ADP expenditure shows that highest share are in Social Infrastructure (54.7%) and next highest expenditure is in Physical Infrastructure (27.2%).

**a.4 Budget Deficit**

(in crore Tk.)

	Overall Balance	Overall Balance as % of GDP
2005-06	-12658.8	-3.0
2006-07	-13125.4	-2.8
2007-08		
June	-9674.6	-21.4
Up to June	-26650.9 (including BPC) -19328.4 (excluding BPC)	-4.9(including BPC) -3.6(excluding BPC)

Source: Integrated Budgeting & Accounting System (iBAS), Finance Division.

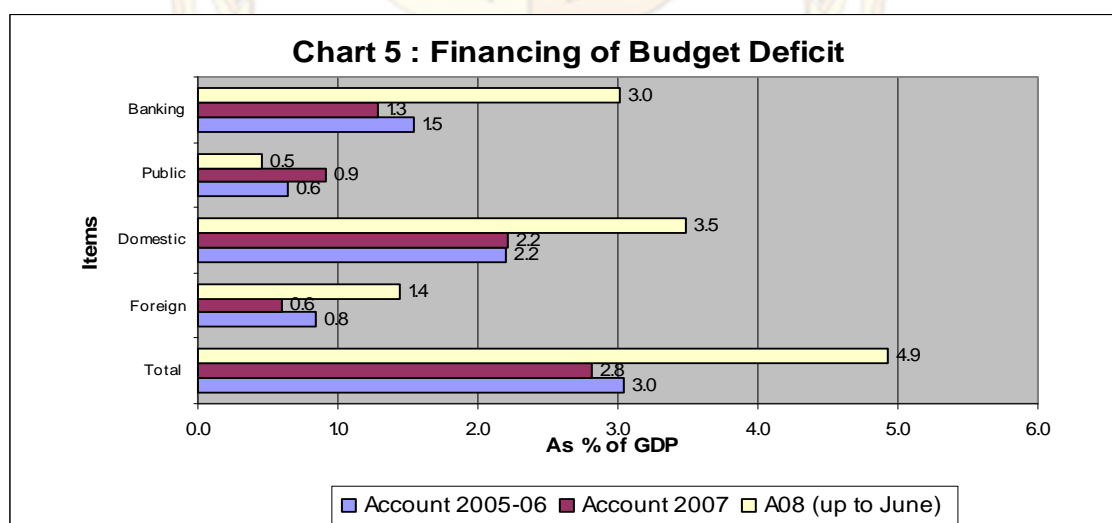
**a.5 Deficit Financing**

(in crore Tk.)

	External (net)	Domestic		Total Financing	Financing as % of GDP
		Bank	Non-Bank		
2005-06	3530.6	6431.4	2696.8	12658.8	3.0
2006-07	2790.0	5982.3	4353.1	13125.4	2.8
2007-08					
June	4657.0	4764.1	253.4	9674.6	21.4
Up to June	7775.5	16349.3* 9026.7**	2526.1	26650.9* 19328.4**	4.9* 3.6**

Source: Integrated Budgeting & Accounting System (iBAS), Finance Division.

\* including BPC \*\* excluding BPC



- Share of non-bank borrowing to total domestic borrowing decreases from 42.12 percent in July- June, FY 07 to 13.38 percent in July- June, FY 08.
- At the same time share of bank borrowing increases from 57.88 percent to 86.62 percent.

## MONTHLY FISCAL-MACRO UPDATE

### a.5 Net Sales of NSD Certificates

(in crore Tk.)

	Sales	Repayment	Net Sale	Outstanding at the end of period
2006-07	15123.53	10948.61	4174.92	43639.18
2007-08	14105.79	11587.50	2518.29	46157.47
Growth	-6.73%	+5.83%	-39.68%	+5.77%
2008-09				
July	1389.64	968.40	421.24	46578.71
Growth over July FY 08	2.52%	-12.24%	67.09%	6.12%

Source: National Savings Directorate.

- Though net sale shows some improvement after December, 2007, but growth in net sale still remains negative (-39.68%) in FY 08 compared to the previous fiscal year.

## A. MONETARY SECTOR

### b.1 Monetary and credit development

(in crore Tk.)

	Outstanding Stock at the end of period				
	2006-07	2007-08	Growth	2008-09 (July <sup>p</sup> )	Growth(%) over July, FY08
Net Foreign Asset	32888.40	37845.40	15.07	37845.30	13.98
Net Domestic Asset	179097.80	210949.50	18.10	213405.50	19.83
Domestic credit	204267.60	248767.80	20.95	252006.70	21.61
Public Sector	53495.40	58632.00	9.60	59830.80	10.07
Govt. (net)	36040.00	46999.60	30.41	48484.60	30.61
Other Public Sector	17455.40	11632.40	-33.36	11346.20	-34.17
Private Sector	150772.20	190135.80	24.94	192175.90	25.72
Broad Money	211986.20	248794.90	17.63	251250.70	18.91

Source: Bangladesh Bank. p. Provisional

- At the end of July, 2008 broad money growth stands to 18.91 percent.
- Growth in Net Foreign Asset is 13.98 percent.
- Share of Net Foreign Asset in M<sub>2</sub> is 15.09 percent.
- There has been higher growth in Govt. (net) (30.61%) but negative growth in other public sector credit (-34.17%).
- Strong growth in private sector credit (25.72%) continues.

## MONTHLY FISCAL-MACRO UPDATE

### b.2 Reserve money and money multiplier

	Outstanding Stock at the end of period				
	2006-07	2007-08	Change	2008-09 (July)	Change over July FY08
Reserve money	44073.1	52789.60	19.78 %	52488.90	17.70%
Reserve Money multiplier	4.80	4.71	-0.09	4.79	0.05

Source: Bangladesh Bank.

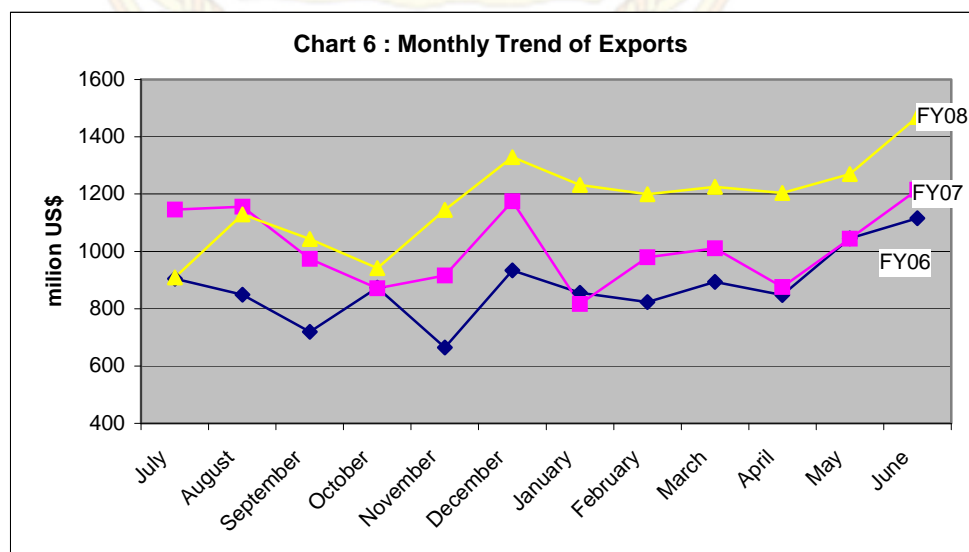
## B. EXTERNAL SECTOR

### c.1 Export

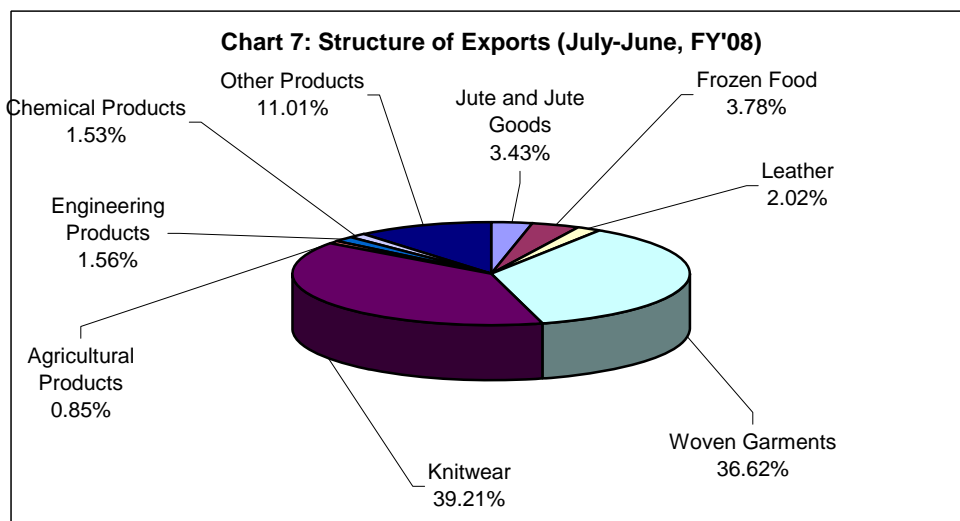
(in million US\$)

	2005-06	2006-07	2007-08	
			June	July- June
Export	10526.16	12177.86	1469.51	14110.80
Growth (%)	21.63	15.69	20.65*	15.87*

Source: Export Promotion Bureau. \*Growth over the same period of the previous fiscal year.



**c.1.1 Structure of Exports**



- Export sectors records robust growth of 15.87 percent.
- Strong growth in export is mainly due to increase in Knitwear (21.50%), Woven Garments (10.94%), Frozen food (3.64%), Leather (6.89%), and Raw Jute and Jute goods (3.43%) export.
- Exports of engineering products declined by 7.27 percent.

**c.2 Imports (c&f)**

(in million US\$)

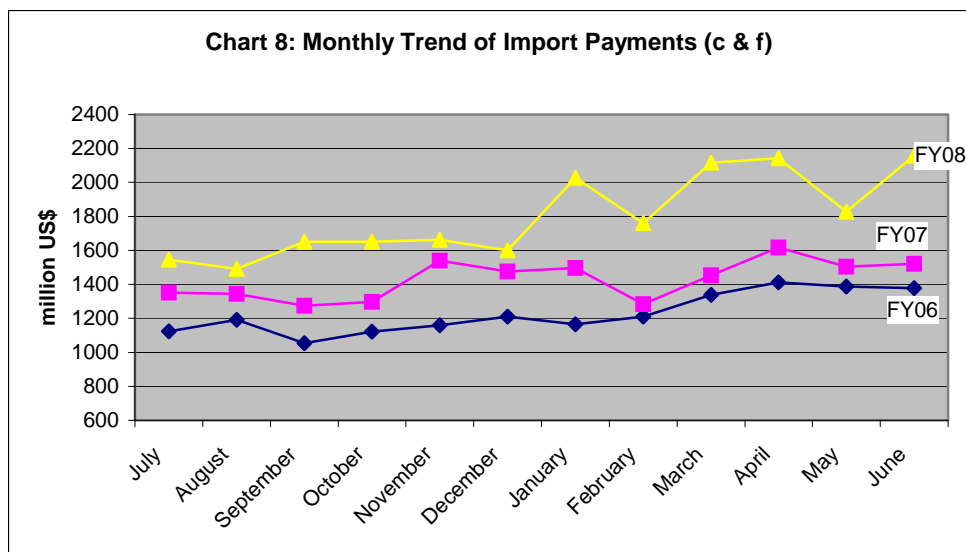
	2006-07	2007-08 <sup>p</sup>	2008-09
			July
Import payments	17156.80	21629.00	2071.30
Growth <sup>a</sup>	16.35	26.07	33.98
LCs Opened	17451.01	24435.61	2331.89
Growth <sup>a</sup>	14.47	40.02	29.14
LCs Settled	15971.35	20372.60	1952.76
Growth <sup>a</sup>	14.49	27.56	31.96

Source: Bangladesh Bank.

p-provisional ;

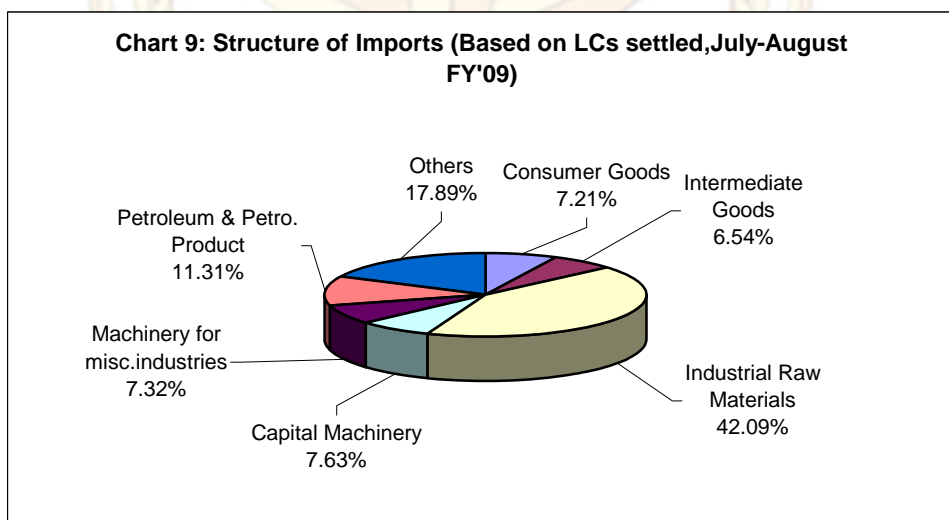
a. Growth rate (in percent) over the same period of the previous fiscal year.





- In the fiscal year 2007-08, the import sector records massive growth of 26.07 percent.
- In July, 2008 import payments increased by 33.98 percent compared to the same period of the previous fiscal year.

### C.2.1 Structure of Imports (Based on LCs settled)



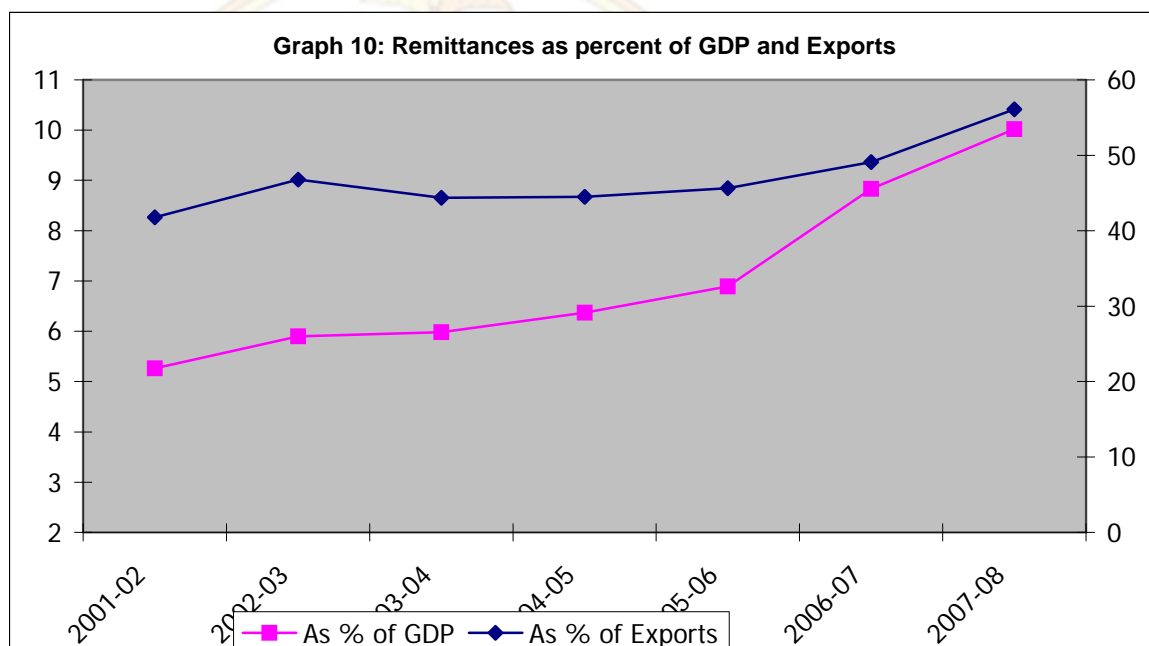
- Up to August, FY'09 import of consumer goods recorded a decrease of 17.20 percent.
- Import of intermediate goods increased by 10.54 percent.
- Import growth of industrial raw materials is 45.34 percent.
- Growth in capital machinery and machinery for misc. industry recorded an increase of 25.57 percent.

c.3 Remittances

(in million US\$)

	2006-07	2007-08	2008-09	
			August	July-August
Remittances	5978.47	7914.78	721.92	1542.63
Growth <sup>a</sup>	24.50	32.39	53.29	48.61
As % of GDP	8.83	10.02	-	-
As % of Export	49.09	56.09	-	-

Source: Bangladesh Bank. p. provisional, - indicates data are not available

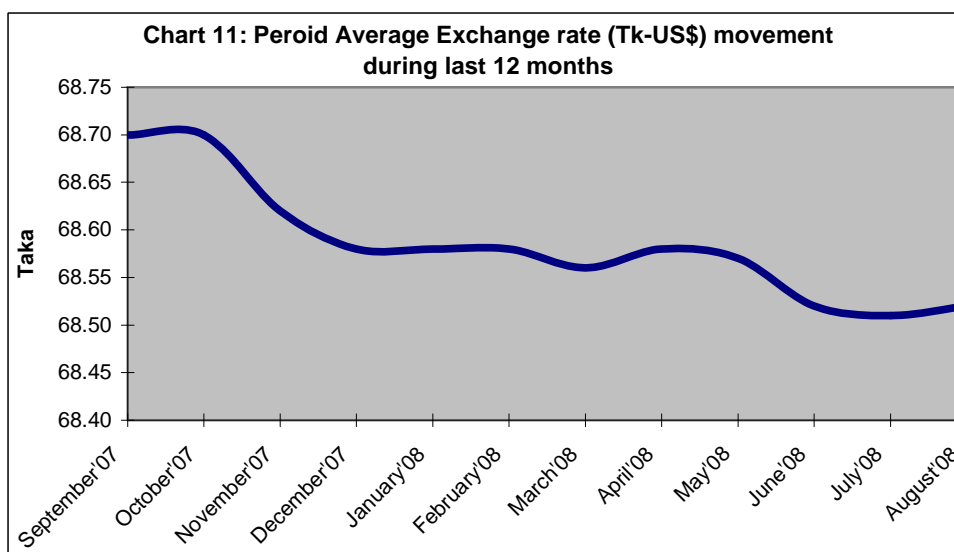


- In FY 08 remittances inflow records a robust growth of 32.39 percent.
- In FY08 remittances as percent of GDP and Export were 10.02 percent and 56.09 percent respectively which are relatively higher than previous fiscal year.
- In August, FY 09 remittances inflow records a robust growth of 53.29 percent.

**c.4 Exchange Rate Movement**

	Average	End of the period
2005-06	67.08	69.67
2006-07	69.03	68.80
2007-08	68.60	68.52
2008-09		
July	68.5107	68.5189
August	68.5181	68.5200

Source: Bangladesh Bank.



- Slight appreciation of taka at August, 2008 against US dollar compared to the same period of the previous year.

**c.5 Foreign Exchange Reserve**

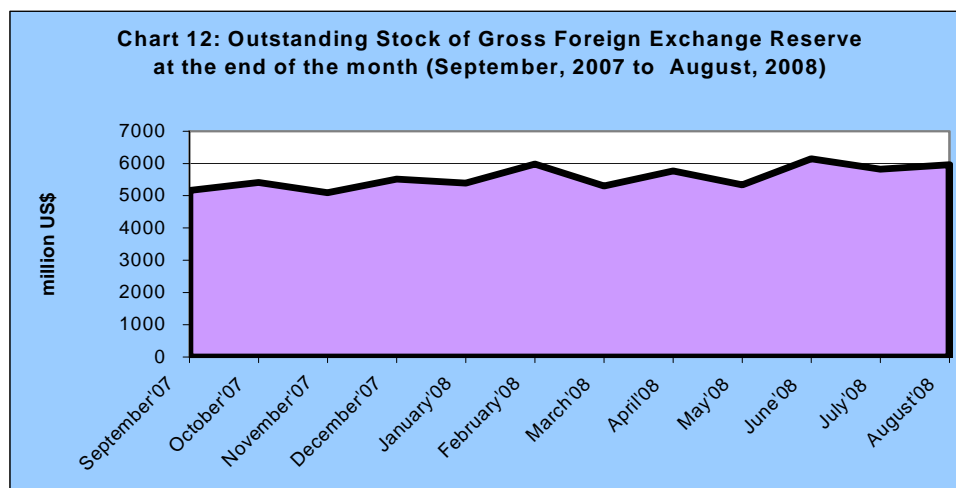
(in million US\$)

	2005-06	2006-07	As on August 31, 2008
Reserve	3483.78	5077.24	5965.77
in month of import payment	2.83	3.55	3.05*

Source: Bangladesh Bank.

\* Calculation based on settlement of LCs in July, FY 09.

- On the basis of import LCs settled in July, FY 09 the foreign exchange reserve is equivalent to 3.05 months import payments.

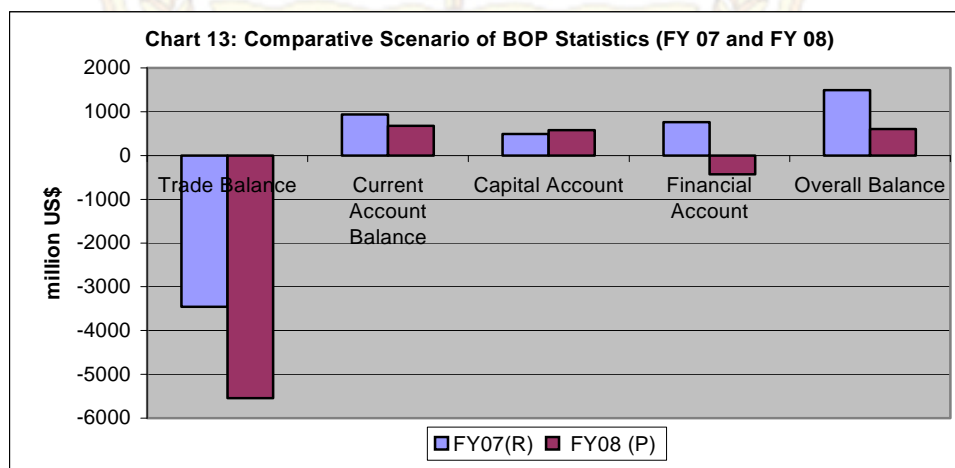


### c.6 Balance of Payments

(in million US\$)

	2005-06	2006-07	2007-08 <sup>p</sup>
Trade Balance	-2889	-3458	-5541
Current Account Balance	824	936	672
Capital Account	375	490	576
Financial Account	-141	762	-431
Overall Balance	338	1493	604

Source: Bangladesh Bank. p- provisional



- Current account balance records a surplus of 672million US\$ in FY 08, which was 936 million US\$ in the previous fiscal year.
- Compare to FY 07, in FY 08 trade gap widens significantly due to the larger increase in import.

**A. REAL SECTOR**

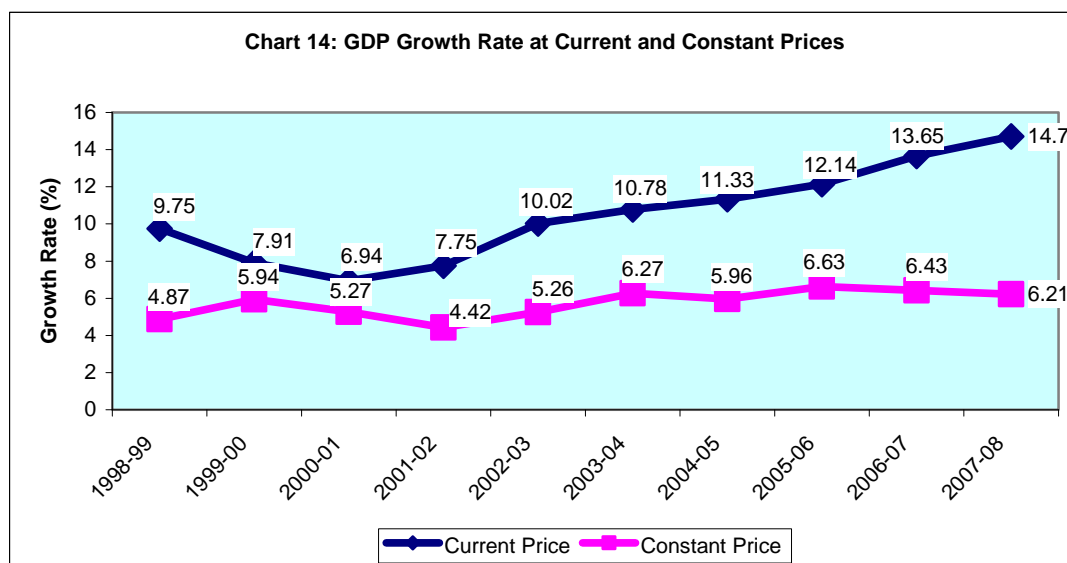
**d.1 Gross Domestic Product**

(Crore Taka)

	2004-05	2005-06	2006-07	2007-08 <sup>P</sup>
GDP at constant prices	266974	284673	302971	321786
Growth (%)	5.96	6.63	6.43	6.21
Agriculture	2.21	4.94	4.56	3.61
Industry	8.28	9.74	8.38	6.87
Service	6.36	6.40	6.92	6.69
GDP at current prices	370707	415728	472477	541919
Growth (%)	11.33	12.14	13.65	14.70
GNI at current prices	389635	442935	507752	585318
Per capita GDP (Tk.)	27061	29955	33607	38056
Per capita GNI (Tk.)	28443	31915	36116	41103
Per capita GDP (US\$)	441	447	487	554
Per capita GNI (US\$)	463	476	523	599

Source: Bangladesh Bureau of Statistics. P- Provisional.

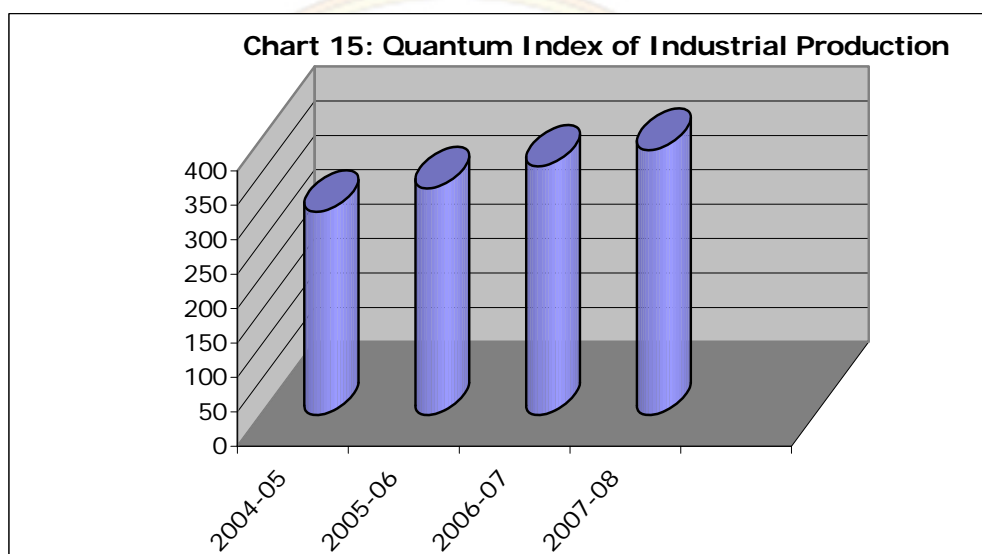
- Real GDP growth in FY 08 provisionally estimated to be 6.21 percent of which
  - Growth in Agriculture has been estimated at 3.61 percent
  - Growth in Industry is estimated 6.87 percent
  - Service sector growth is estimated at 6.69 percent.
- Per capita GDP in FY 08 exceeded US\$ 500 mark and reached to US\$ 554.



**d.2 Quantum Index of Industrial Production (Large and Medium Scale Manufacturing Industry, Base: 1988-89=100)**

FY	Index	Growth Rate
2004-05	294.72	-
2005-06	328.35	11.41
2006-07	360.33	9.74
2007-08 <sup>P</sup>		
June	427.98	6.57
July-June	384.82	6.80

Source: BBS

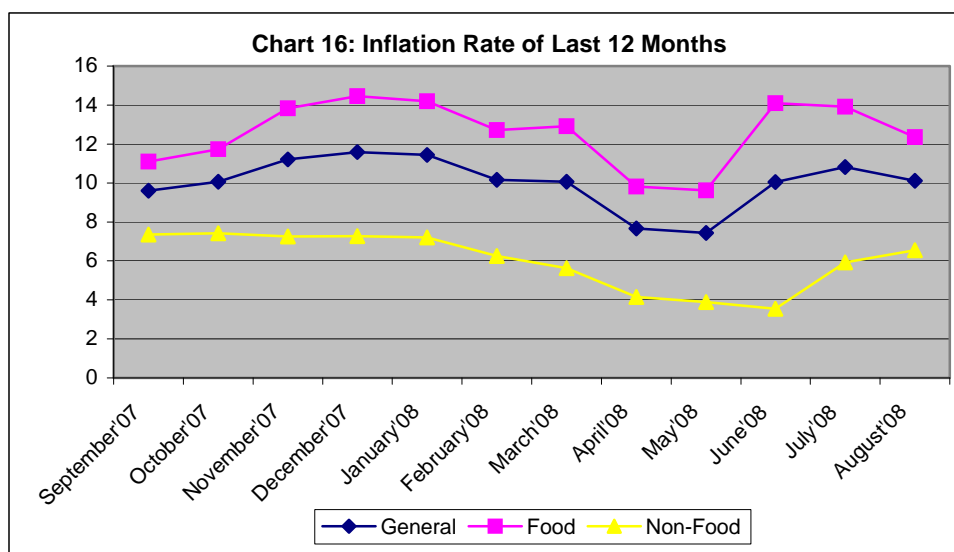


- The growth rate of the Quantum Index of Industrial Production (Large and Medium Scale Manufacturing Industry) is 9.74 percent in FY 07 which was 11.41 percent in FY 06.
- In FY 08, the average index is 384.82 which is 6.80 percent higher compared to the same period of FY 07.

**d.3 Consumer Price Index and Inflation (National)**

FY	CPI (General)	Point to Point Inflation		
		General	Food	Non-Food
2005-06	164.21	7.17	7.76	6.40
2006-07	176.06	7.22	8.12	5.90
2007-08	193.54	9.93	12.28	6.32
2008-09				
July	206.86	10.82	13.92	5.93
	207.27	10.11	12.36	6.55

Source: Bangladesh Bureau of Statistics.



- In FY08 the average rate of inflation recorded at 9.93 percent.
- Upward inflationary pressure continues in the first two months of the FY 09.
- In August, 2008 the rate of inflation is 10.11 percent. The food and non-food inflation were 12.36 percent and 6.55 percent respectively.