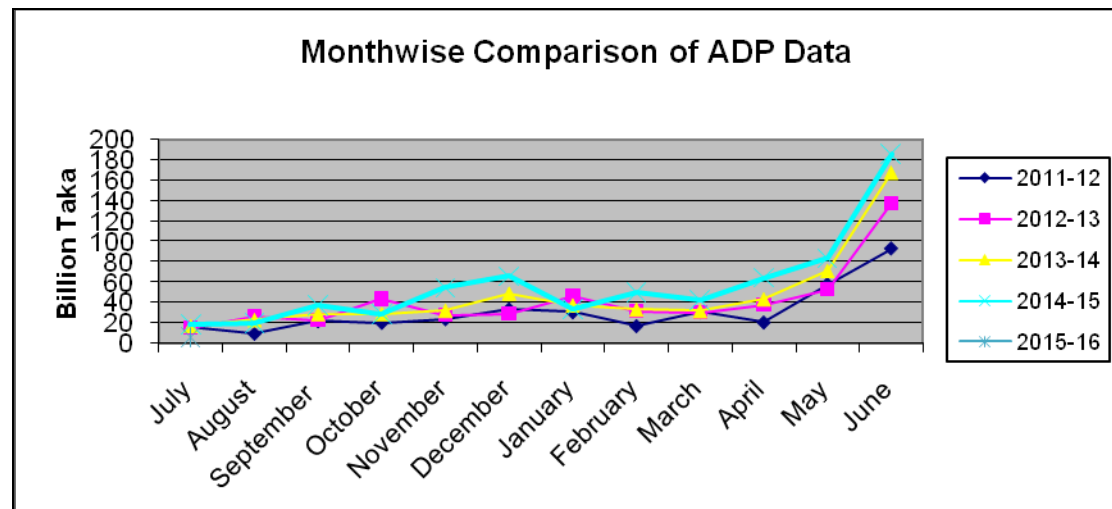


ADP Allocation and its Expenditure in Different Months (July'15)

(Taka in Billion)

Allocation		Expenditure											
Fiscal year	ADP/RADP	July Amount (%)	August Amount (%)	September Amount (%)	October Amount (%)	November Amount (%)	December Amount (%)	January Amount (%)	February Amount (%)	March Amount (%)	April Amount (%)	May Amount (%)	June Amount (%)
2012-13	550.00 523.66	15.32 3%	26.19 5%	22.30 4%	43.48 8%	27.73 5%	29.28 5%	46.07 8%	31.59 6%	30.22 5%	37.56 7%	52.83 10%	137.69 26%
2013-14	658.70 600.00	17.44 3%	23.37 4%	29.13 4%	29.12 4%	32.50 5%	49.31 7%	37.69 6%	33.62 5%	32.11 5%	43.75 7%	71.53 12%	167.65 28%
2014-15	803.15 *750.00	18.47 2%	19.69 2%	37.71 5%	28.51 4%	54.70 7%	65.86 8%	33.64 4%	50.44 6%	42.52 5%	64.40 9%	83.37 11%	186.01 25%
2015-16	970.00	6.06 1%											

***Total ADP Allocation (Except Self Finance) in 2015-16 = 970.00 Billion.**



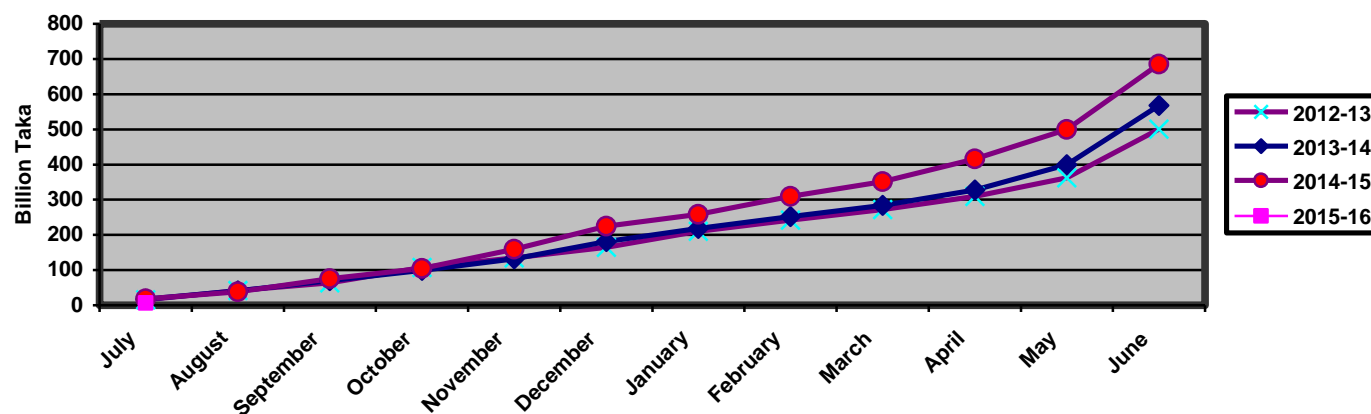
Cumulative ADP Expenditure (July'15)

(Taka in Billion)

Allocation		Expenditure											
Fiscal year	ADP RADP	July Amount (%)	August Amount (%)	September Amount (%)	October Amount (%)	November Amount (%)	December Amount (%)	January Amount (%)	February Amount (%)	March Amount (%)	April Amount (%)	May Amount (%)	June Amount (%)
2011-12	460.00	16.32	26.21	48.35	68.92	93.13	127.03	157.84	175.18	206.17	227.09	285.53	378.72
	410.80	4%	6%	11%	15%	20%	28%	34%	38%	45%	55%	70%	92%
2012-13	550.00	15.32	41.51	63.81	107.29	135.02	164.30	210.37	241.96	272.18	309.74	362.57	500.26
	523.66	3%	8%	12%	20%	25%	30%	38%	44%	49%	54%	69%	96%
2013-14	658.70	17.44	40.81	69.94	99.06	131.56	180.87	218.56	252.18	284.29	328.04	399.82	567.47
	600.00	3%	6%	11%	15%	20%	27%	33%	38%	43%	55%	67%	95%
2014-15	803.15	18.47	38.16	75.87	104.38	159.08	224.94	258.58	309.02	351.54	415.94	499.31	685.32
	*750.00	2%	5%	9%	13%	20%	28%	32%	38%	43%	55%	67%	91%
2015-16	970.00	6.06											
		1%											

*Total ADP Allocation (Except Self Finance) in 2015-16 = 970.00 Billion.

Cumulative ADP Expenditure



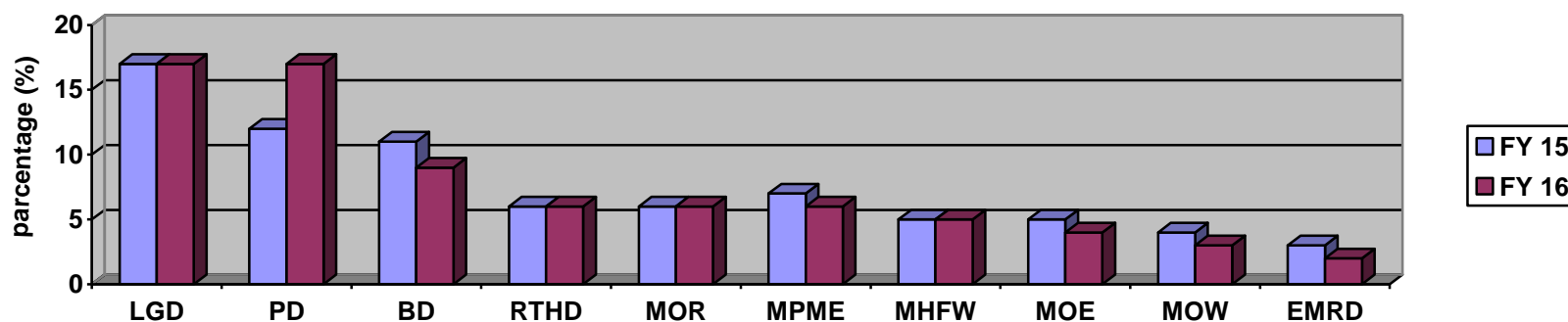
2.1 10 Ministries with Highest ADP Allocation in FY 2015-16:

(Taka in Billion)

Sl. No.	Ministry/Division	FY 2014-15		FY 2015-16	
		Allocation	Percentage of Total National Dev. Budget	Allocation	Percentage of Total National Dev. Budget
1.	Local Government Division	134.67	17%	166.50	17%
2.	Power Division	92.73	12%	164.85	17%
3.	Bridges Division	87.35	11%	89.21	9%
4.	Road Transport and Highways Division	46.07	6%	56.75	6%
5.	Ministry of Railway	44.85	6%	56.50	6%
6.	M/O Primary & Mass Education	57.78	7%	55.41	6%
7.	M/O Health and Family Welfare	43.49	5%	53.31	5%
8.	Ministry of Education	36.47	5%	41.97	4%
9.	Ministry of Water Resources	28.31	4%	30.62	3%
10.	Energy & Mineral R. Division	22.22	3%	19.93	2%

***Total ADP Allocation (Except Self Finance) in 2015-16 = 970.00 Billion.**

Ten Ministries With Highest ADP Allocation in FY 2015-16



2.2 ADP Expenditure (Up to July'15) of Highest ADP Allocated 10 Ministries:

(Taka in Billion)

Sl. No	Ministry/Division	FY 2014-15		FY 2015-16		Change from FY 2014-15 to FY 2015-16 Expenditure +/-	Position according to highest ADP Expenditure among all Ministry/Division
		Up to July '14 ADP Expenditure	% of Total Allocation	Up to July '15 ADP Expenditure	% of Total Allocation		
1.	Power Division	1.92	2%	0.83	0.5%	-	14 th
2.	M/O Health and Family Welfare	0.40	0.9	0.13	0.3%	-	18 th
3.	Local Government Division	6.10	4%	0.37	0.2%	-	19 th
4.	Road Transport and Highways Division	-	-	0.06	0.1%	-	24 th
5.	Bridges Division	6.43	7%	0.06	0.1%	-	26 th
6.	M/O Primary & Mass Education	0.08	0.1	0.03	0.1%	-	27 st
7.	Energy & Mineral R. Division	0.56	3%	0.01	0.01%	-	28 th
8.	Ministry of Education	0.03	0.1	0.02	0.01%	-	29 th
9.	Ministry of Railway	0.03	0.1	0.01	0.01%	-	31 th
10.	Ministry of Water Resources	0.01	-	0.00	-	-	49 th

ADP Expenditure Of Highest ADP Allocation 10 Ministries (Up to July'15)

