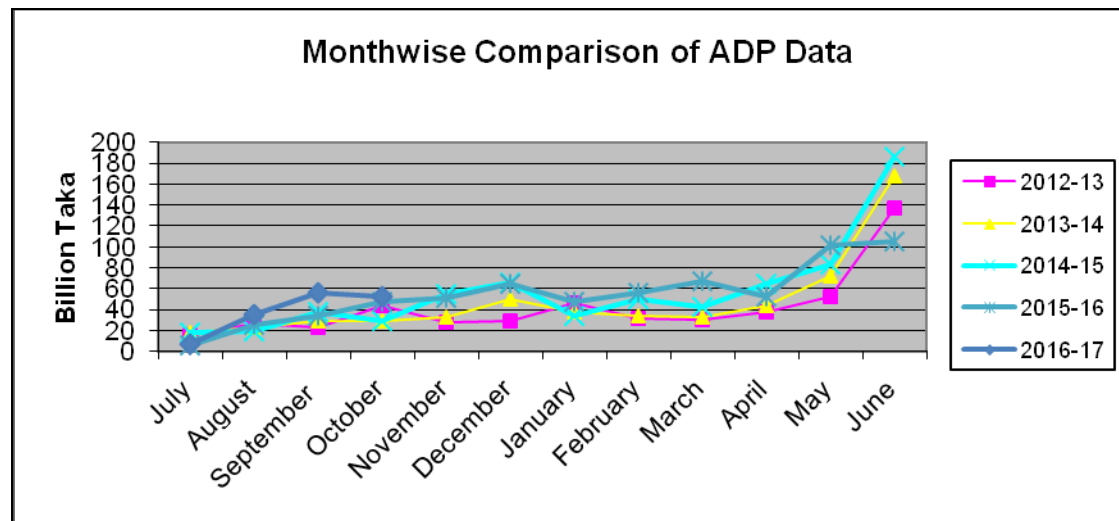


ADP Allocation and its Expenditure in Different Months (July'16-October'16)

(Taka in Billion)

Allocation		Expenditure											
Fiscal year	ADP/RADP	July Amount (%)	August Amount (%)	September Amount (%)	October Amount (%)	November Amount (%)	December Amount (%)	January Amount (%)	February Amount (%)	March Amount (%)	April Amount (%)	May Amount (%)	June Amount (%)
2012-13	550.00	15.32	26.19	22.30	43.48	27.73	29.28	46.07	31.59	30.22	37.56	52.83	137.69
	523.66	3%	5%	4%	8%	5%	5%	8%	6%	5%	7%	10%	26%
2013-14	658.70	17.44	23.37	29.13	29.12	32.50	49.31	37.69	33.62	32.11	43.75	71.53	167.65
	600.00	3%	4%	4%	4%	5%	7%	6%	5%	5%	7%	12%	28%
2014-15	803.15	18.47	19.69	37.71	28.51	54.70	65.86	33.64	50.44	42.52	64.40	83.37	186.01
	750.00	2%	2%	5%	4%	7%	8%	4%	6%	5%	9%	11%	25%
2015-16	970.00	6.06	25.34	33.68	46.87	51.25	64.57	47.69	56.63	66.81	52.72	101.54	
	*910.00	1%	3%	3%	5%	5%	7%	5%	6%	7%	6%	11%	
2016-17	1107.00	6.74	34.55	56.20	52.17								
		0.61%	3%	5%	5%								

***Total ADP Allocation (Except Self Finance) in 2016-17 = 1107.00 Billion.**



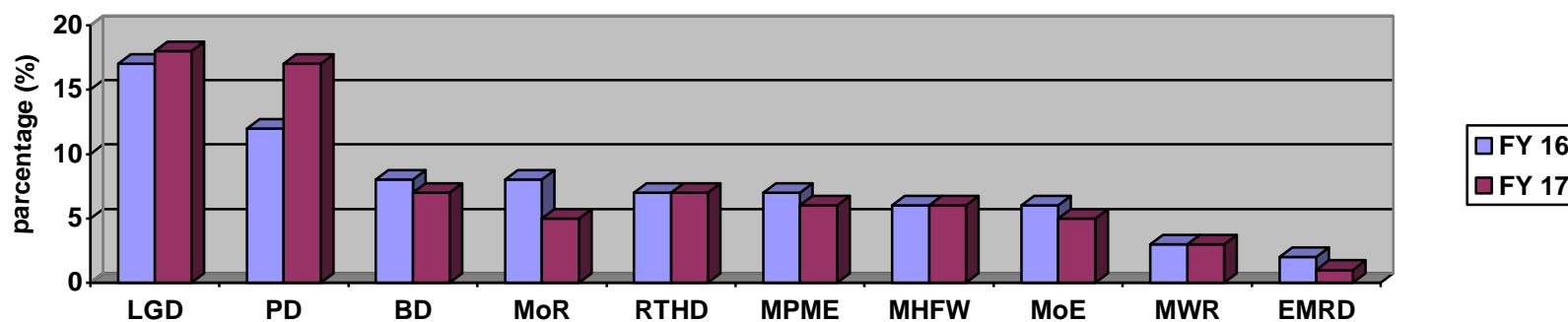
2.1 10 Ministries with Highest ADP Allocation in FY 2016-17:

(Taka in Billion)

Sl. No.	Ministry/Division	FY 2015-16		FY 2016-17	
		Allocation	Percentage of Total National Dev. Budget	Allocation	Percentage of Total National Dev. Budget
1.	Local Government Division	167.36	18%	185.48	17%
2.	Power Division	154.76	17%	130.40	12%
3.	Bridges Division	62.53	7%	92.58	8%
4.	Ministry of Railway	46.30	5%	91.15	8%
5.	Road Transport and Highways Division	63.49	7%	81.61	7%
6.	M/O Primary & Mass Education	52.47	6%	77.10	7%
7.	M/O Health and Family Welfare	51.21	6%	62.35	6%
8.	Ministry of Education	42.57	5%	61.67	6%
9.	Ministry of Water Resources	28.61	3%	37.59	3%
10.	Energy & Mineral R. Division	10.68	1%	19.11	2%

***Total ADP Allocation (Except Self Finance) in 2016-17 = 1107.00 Billion.**

Ten Ministries With Highest ADP Allocation in FY 2016-17



2.2 ADP Expenditure (Up to October'16) of Highest ADP Allocated 10 Ministries:

(Taka in Billion)

Sl. No	Ministry/Division	FY 2015-16		FY 2016-17		Change from FY 2015-16 to FY 2016-17 Expenditure +/-	Position according to highest ADP Expenditure among all Ministry/Division
		Up to October'15 ADP Expenditure	% of Total Allocation	Up to October '16 ADP Expenditure	% of Total Allocation		
1.	Power Division	5.40	3%	35.40	27%	+24%	5 th
2.	Local Government Division	18.29	11%	36.06	19%	+8%	9 th
3.	M/O Primary & Mass Education	6.12	11%	13.58	18%	+7%	12 th
4.	Ministry of Railway	2.01	4%	9.49	10%	+6%	25 th
5.	Energy & Mineral R. Division	0.16	1%	1.73	9%	+8%	28 th
6.	Ministry of Education	5.25	12%	5.40	9%	-3%	29 th
7.	Road Transport and Highways Division	2.47	4%	6.27	8%	+4%	31 st
8.	Bridges Division	3.77	4%	6.53	7%	+3%	37 th
9.	M/O Health and Family Welfare	6.39	12%	3.89	6%	-6%	40 th
10.	Ministry of Water Resources	0.8	1%	1.93	5%	+4%	44 th

ADP Expenditure Of Highest ADP Allocation 10 Ministries (Up to October'16)

