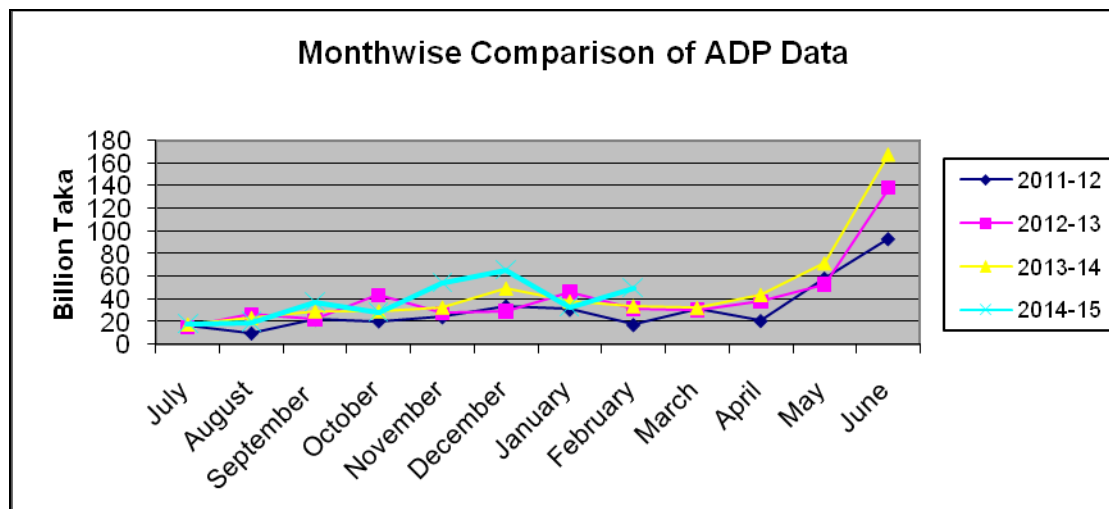


ADP Allocation and its Expenditure in Different Months (July'14-February'2015)

(Taka in Billion)

Allocation		Expenditure											
Fiscal year	ADP/RADP	July Amount (%)	August Amount (%)	September Amount (%)	October Amount (%)	November Amount (%)	December Amount (%)	January Amount (%)	February Amount (%)	March Amount (%)	April Amount (%)	May Amount (%)	June Amount (%)
2011-12	460.00 410.80	16.32 4%	9.89 2%	22.14 5%	20.57 4%	24.21 5%	33.90 7%	30.81 7%	17.34 (4%)	30.99 7%	20.92 5%	58.44 14%	93.19 23%
2012-13	550.00 523.66	15.32 3%	26.19 5%	22.30 4%	43.48 8%	27.73 5%	29.28 5%	46.07 8%	31.59 6%	30.22 5%	37.56 7%	52.83 10%	137.69 26%
2013-14	658.70 600.00	17.44 3%	23.37 4%	29.13 4%	29.12 4%	32.50 5%	49.31 7%	37.69 6%	33.62 5%	32.11 5%	43.75 7%	71.53 12%	167.65 28%
2014-15	*803.15	18.47 2%	19.69 2%	37.71 5%	28.51 4%	54.70 7%	65.86 8%	33.64 4%	50.44 6%				

*Total ADP Allocation (Except Self Finance) in 2014-15 = 803.15 Billion.



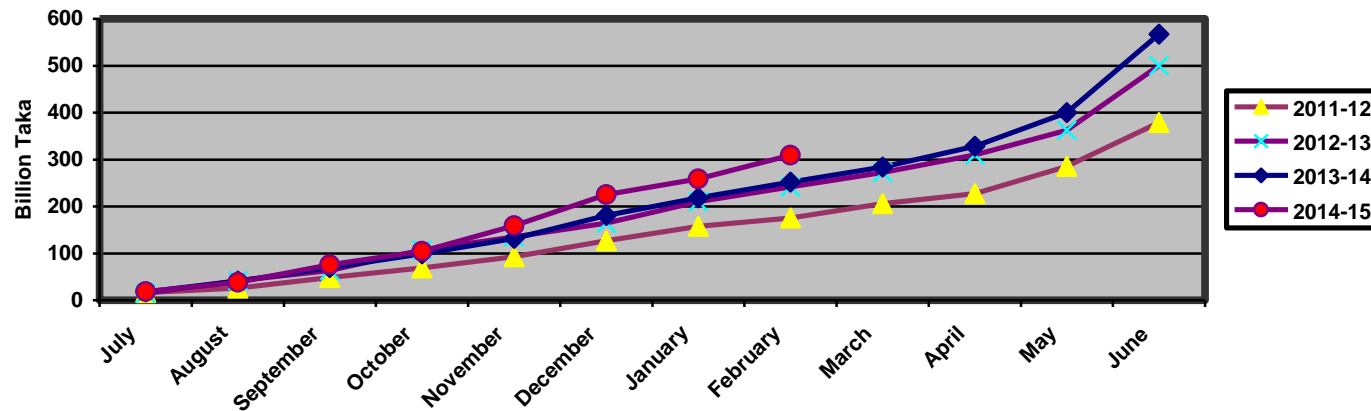
Cumulative ADP Expenditure (July'14- February'2015)

(Taka in Billion)

Allocation		Expenditure											
Fiscal year	ADP RADP	July Amount (%)	August Amount (%)	September Amount (%)	October Amount (%)	November Amount (%)	December Amount (%)	January Amount (%)	February Amount (%)	March Amount (%)	April Amount (%)	May Amount (%)	June Amount (%)
2010-11	385.00	8.36	23.00	33.99	54.24	78.90	102.81	126.41	141.72	175.09	209.09	258.49	329.49
	358.80	2%	6%	9%	14%	20%	27%	33%	37%	45%	60%	72%	92%
2011-12	460.00	16.32	26.21	48.35	68.92	93.13	127.03	157.84	175.18	206.17	227.09	285.53	378.72
	410.80	4%	6%	11%	15%	20%	28%	34%	38%	45%	55%	70%	92%
2012-13	550.00	15.32	41.51	63.81	107.29	135.02	164.30	210.37	241.96	272.18	309.74	362.57	500.26
	523.66	3%	8%	12%	20%	25%	30%	38%	44%	49%	54%	69%	96%
2013-14	658.70	17.44	40.81	69.94	99.06	131.56	180.87	218.56	252.18	284.29	328.04	399.82	567.47
	600.00	3%	6%	11%	15%	20%	27%	33%	38%	43%	55%	67%	95%
2014-15	*803.15	18.47	38.16	75.87	104.38	159.08	224.94	258.58	309.02				
		2%	5%	9%	13%	20%	28%	32%	38%				

***Total ADP Allocation (Except Self Finance) in 2014-15 = 803.15 Billion.**

Cumulative ADP Expenditure



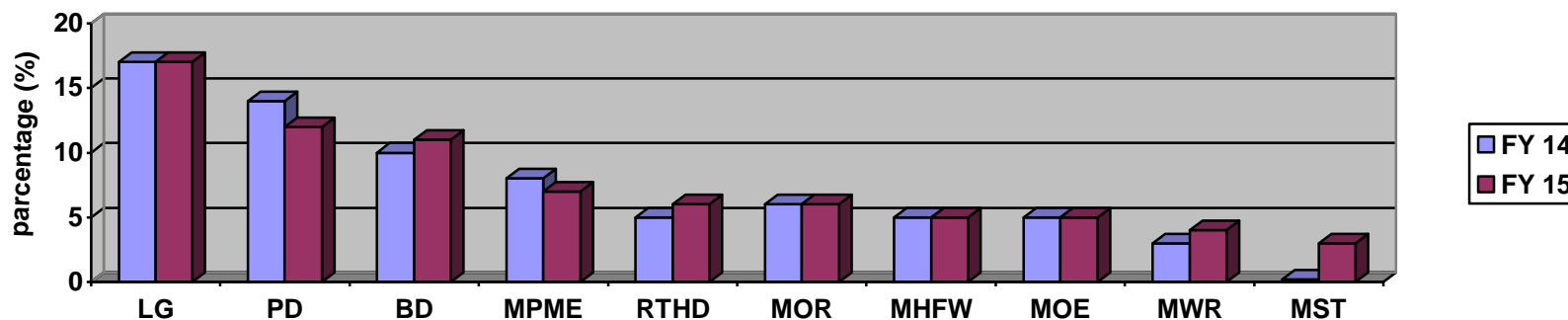
2.1 10 Ministries with Highest ADP Allocation in FY 2014-15:

(Taka in Billion)

Sl. No.	Ministry/Division	FY 2013-14		Current FY 2014-15	
		Allocation	Percentage of Total National Dev. Budget	Allocation	Percentage of Total National Dev. Budget
1.	Local Government Division	111.95	17%	134.67	17%
2.	Power Division	90.53	14%	92.73	12%
3.	Bridges Division	69.99	10%	87.35	11%
4.	M/O Primary & Mass Education	52.78	8%	57.78	7%
5.	Road Transport and Highways Division	34.57	5%	46.07	6%
6.	Ministry of Railway	38.78	6%	44.85	6%
7.	M/O Health and Family Welfare	36.02	5%	43.49	5%
8.	Ministry of Education	31.00	5%	36.47	5%
9.	Ministry of Water Resources	18.50	3%	28.31	4%
10.	Ministry of Science and Technology	1.63	0.2%	23.05	3%

***Total ADP Allocation (Except Self Finance) in 2014-15 = 803.15 Billion.**

Ten Ministries With Highest ADP Allocation in FY 2014-15



2.2 ADP Expenditure (Up to February'15) of Highest ADP Allocated 10 Ministries:

(Taka in Billion)

Sl. No	Ministry/Division	FY 2013-14		Current FY 2014-15		February '14 to February '15 Expenditure +/-	Position according to highest ADP Expenditure among all Ministry/Division
		Up to February '14 ADP Expenditure	% of Total Allocation	Up to February '15 ADP Expenditure	% of Total Allocation		
1.	Ministry of Science and Technology	0.27	17%	18.80	82%	65%	1 st
2.	Local Government Division	58.40	51%	70.20	52%	1%	8 th
3.	Ministry of Education	11.63	38%	16.32	45%	7%	13 th
4.	M/O Primary & Mass Education	25.03	47%	24.08	42%	-5%	17 th
5.	Road Transport and Highways Division	12.76	37%	16.72	36%	1%	24 th
6.	M/O Health and Family Welfare	15.53	43%	15.58	36%	-7%	26 th
7.	Power Division	28.82	32%	32.26	35%	3%	28 th
8.	Bridges Division	3.62	5%	28.60	33%	28%	32 th
9.	Ministry of Railway	15.95	41%	12.46	28%	-13%	40 th
10.	Ministry of Water Resources	6.31	34%	6.13	22%	-12%	45 th

ADP Expenditure Of Highest ADP Allocation 10 Ministries (Up to February'15)

