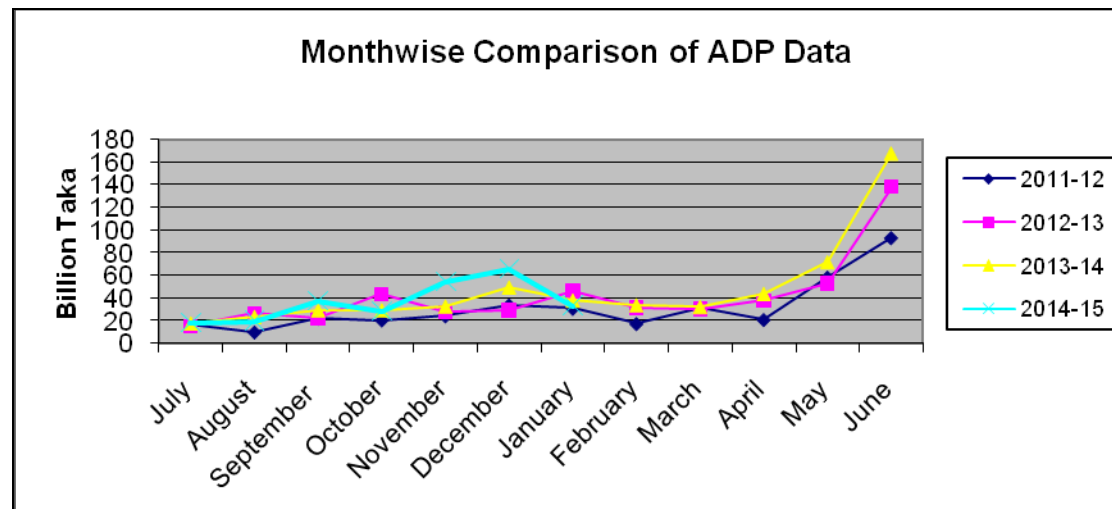


ADP Allocation and its Expenditure in Different Months (July'14-January'2015)

(Taka in Billion)

Allocation		Expenditure											
Fiscal year	ADP/RADP	July Amount (%)	August Amount (%)	September Amount (%)	October Amount (%)	November Amount (%)	December Amount (%)	January Amount (%)	February Amount (%)	March Amount (%)	April Amount (%)	May Amount (%)	June Amount (%)
2011-12	460.00	16.32	9.89	22.14	20.57	24.21	33.90	30.81	17.34	30.99	20.92	58.44	93.19
	410.80	4%	2%	5%	4%	5%	7%	7%	(4%)	7%	5%	14%	23%
2012-13	550.00	15.32	26.19	22.30	43.48	27.73	29.28	46.07	31.59	30.22	37.56	52.83	137.69
	523.66	3%	5%	4%	8%	5%	5%	8%	6%	5%	7%	10%	26%
2013-14	658.70	17.44	23.37	29.13	29.12	32.50	49.31	37.69	33.62	32.11	43.75	71.53	167.65
	600.00	3%	4%	4%	4%	5%	7%	6%	5%	5%	7%	12%	28%
2014-15	*803.15	18.47	19.69	37.71	28.51	54.70	65.86	33.64					
		2%	2%	5%	4%	7%	8%	4%					

*Total ADP Allocation (Except Self Finance) in 2014-15 = 803.15 Billion.



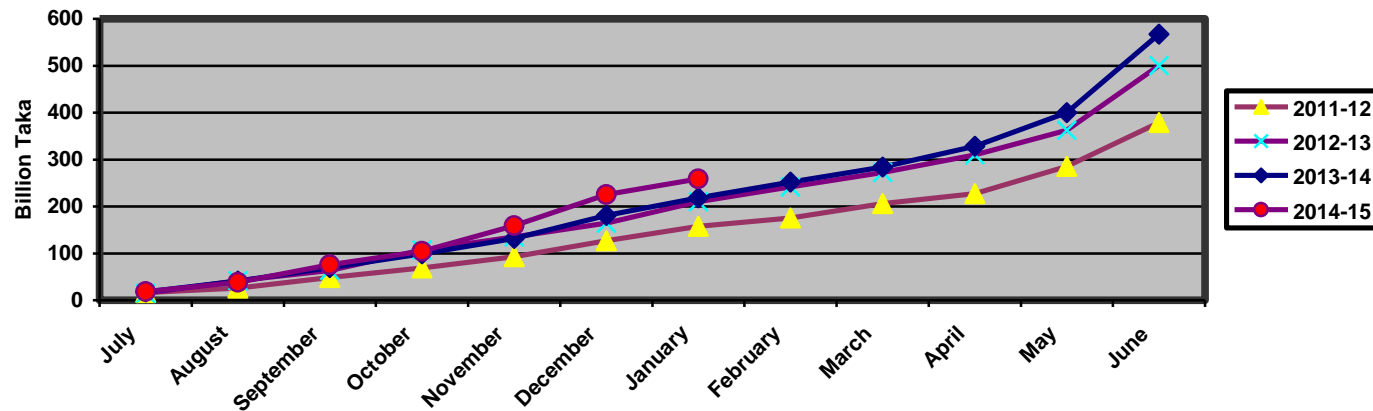
Cumulative ADP Expenditure (July'14- January'2015)

(Taka in Billion)

Allocation		Expenditure											
Fiscal year	ADP RADP	July Amount (%)	August Amount (%)	September Amount (%)	October Amount (%)	November Amount (%)	December Amount (%)	January Amount (%)	February Amount (%)	March Amount (%)	April Amount (%)	May Amount (%)	June Amount (%)
2010-11	385.00	8.36	23.00	33.99	54.24	78.90	102.81	126.41	141.72	175.09	209.09	258.49	329.49
	358.80	2%	6%	9%	14%	20%	27%	33%	37%	45%	60%	72%	92%
2011-12	460.00	16.32	26.21	48.35	68.92	93.13	127.03	157.84	175.18	206.17	227.09	285.53	378.72
	410.80	4%	6%	11%	15%	20%	28%	34%	38%	45%	55%	70%	92%
2012-13	550.00	15.32	41.51	63.81	107.29	135.02	164.30	210.37	241.96	272.18	309.74	362.57	500.26
	523.66	3%	8%	12%	20%	25%	30%	38%	44%	49%	54%	69%	96%
2013-14	658.70	17.44	40.81	69.94	99.06	131.56	180.87	218.56	252.18	284.29	328.04	399.82	567.47
	600.00	3%	6%	11%	15%	20%	27%	33%	38%	43%	55%	67%	95%
2014-15	*803.15	18.47	38.16	75.87	104.38	159.08	224.94	258.58					
		2%	5%	9%	13%	20%	28%	32%					

*Total ADP Allocation (Except Self Finance) in 2014-15 = 803.15 Billion.

Cumulative ADP Expenditure



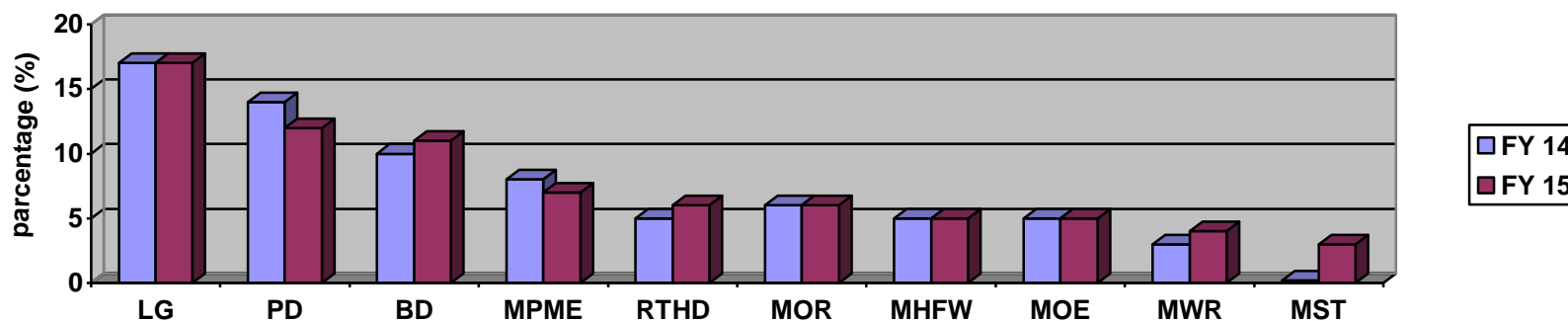
2.1 10 Ministries with Highest ADP Allocation in FY 2014-15:

(Taka in Billion)

Sl. No.	Ministry/Division	FY 2013-14		Current FY 2014-15	
		Allocation	Percentage of Total National Dev. Budget	Allocation	Percentage of Total National Dev. Budget
1.	Local Government Division	111.95	17%	134.67	17%
2.	Power Division	90.53	14%	92.73	12%
3.	Bridges Division	69.99	10%	87.35	11%
4.	M/O Primary & Mass Education	52.78	8%	57.78	7%
5.	Road Transport and Highways Division	34.57	5%	46.07	6%
6.	Ministry of Railway	38.78	6%	44.85	6%
7.	M/O Health and Family Welfare	36.02	5%	43.49	5%
8.	Ministry of Education	31.00	5%	36.47	5%
9.	Ministry of Water Resources	18.50	3%	28.31	4%
10.	Ministry of Science and Technology	1.63	0.2%	23.05	3%

***Total ADP Allocation (Except Self Finance) in 2014-15 = 803.15 Billion.**

Ten Ministries With Highest ADP Allocation in FY 2014-15



2.2 ADP Expenditure (Up to January'15) of Highest ADP Allocated 10 Ministries:

(Taka in Billion)

Sl. No	Ministry/Division	FY 2013-14		Current FY 2014-15		January '14 to January '15 Expenditure +/-	Position according to highest ADP Expenditure among all Ministry/Division
		Up to January '14 ADP Expenditure	% of Total Allocation	Up to January '15 ADP Expenditure	% of Total Allocation		
1.	Ministry of Science and Technology	0.27	16%	18.76	81%	65%	1 st
2.	Local Government Division	45.62	41%	56.58	42%	1%	11 th
3.	Ministry of Education	9.24	30%	14.63	40%	10%	13 th
4.	M/O Primary & Mass Education	24.04	46%	19.41	34%	-12%	18 th
5.	Power Division	28.28	31%	29.56	32%	1%	23 th
6.	Road Transport and Highways Division	10.74	31%	14.52	32%	1%	24 th
7.	Bridges Division	2.60	4%	24.86	29%	25%	30 th
8.	M/O Health and Family Welfare	12.68	35%	10.47	24%	-11%	36 th
9.	Ministry of Railway	14.48	37%	10.50	23%	-14%	37 th
10.	Ministry of Water Resources	5.74	31%	3.40	12%	-19%	49 th

ADP Expenditure Of Highest ADP Allocation 10 Ministries (Up to January'15)

