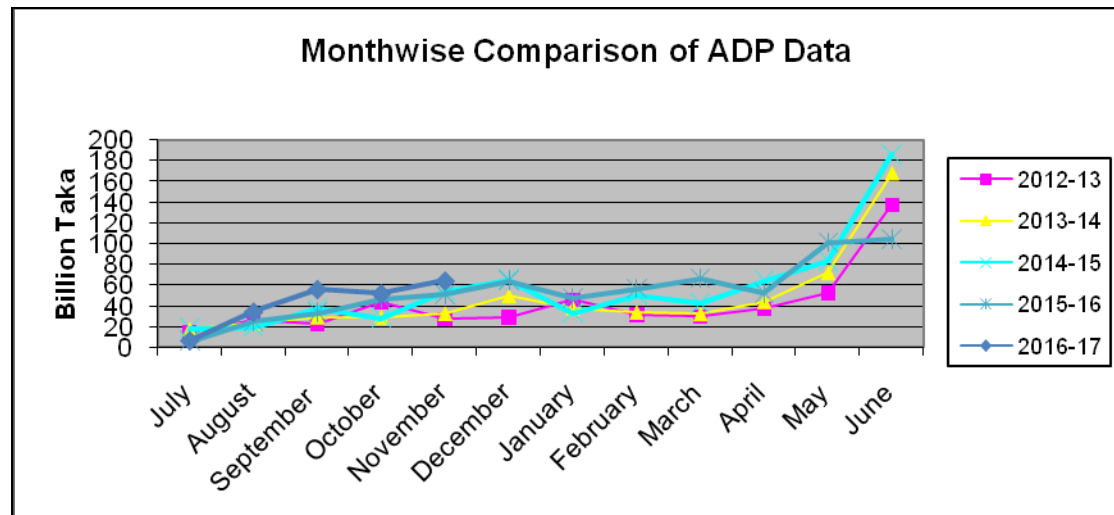


### ADP Allocation and its Expenditure in Different Months (July'16-November'16)

(Taka in Billion)

Allocation		Expenditure											
Fiscal year	ADP/RADP	July Amount (%)	August Amount (%)	September Amount (%)	October Amount (%)	November Amount (%)	December Amount (%)	January Amount (%)	February Amount (%)	March Amount (%)	April Amount (%)	May Amount (%)	June Amount (%)
2012-13	550.00	15.32	26.19	22.30	43.48	27.73	29.28	46.07	31.59	30.22	37.56	52.83	<b>137.69</b>
	<b>523.66</b>	3%	5%	4%	8%	5%	5%	8%	6%	5%	7%	10%	<b>26%</b>
2013-14	658.70	17.44	23.37	29.13	29.12	32.50	49.31	37.69	33.62	32.11	43.75	<b>71.53</b>	<b>167.65</b>
	<b>600.00</b>	3%	4%	4%	4%	5%	7%	6%	5%	5%	7%	<b>12%</b>	<b>28%</b>
2014-15	803.15	18.47	19.69	37.71	28.51	54.70	65.86	33.64	50.44	42.52	64.40	<b>83.37</b>	<b>186.01</b>
	<b>750.00</b>	2%	2%	5%	4%	7%	8%	4%	6%	5%	9%	<b>11%</b>	<b>25%</b>
2015-16	970.00	6.06	25.34	33.68	46.87	51.25	64.57	47.69	56.63	66.81	52.72	<b>101.54</b>	
	<b>*910.00</b>	1%	3%	3%	5%	5%	7%	5%	6%	7%	6%	<b>11%</b>	
2016-17	1107.00	6.74	34.55	56.20	52.17	<b>64.33</b>							
		0.61%	3%	5%	5%	<b>6%</b>							

**\*Total ADP Allocation (Except Self Finance) in 2016-17 = 1107.00 Billion.**



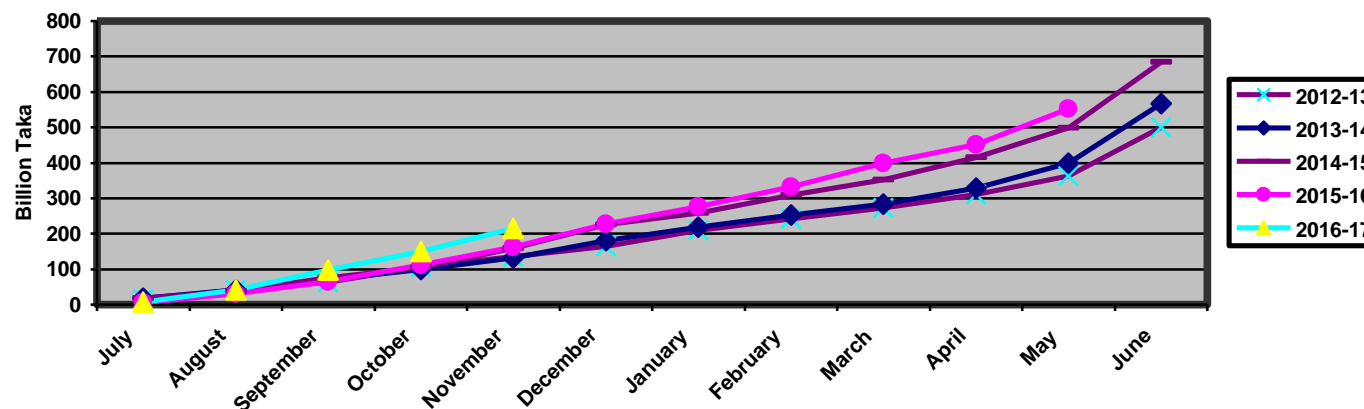
### Cumulative ADP Expenditure (July'16-November'16)

(Taka in Billion)

Allocation		Expenditure											
Fiscal year	ADP RADP	July Amount (%)	August Amount (%)	September Amount (%)	October Amount (%)	November Amount (%)	December Amount (%)	January Amount (%)	February Amount (%)	March Amount (%)	April Amount (%)	May Amount (%)	June Amount (%)
2012-13	550.00	15.32	41.51	63.81	107.29	135.02	164.30	210.37	241.96	272.18	309.74	362.57	<b>500.26</b>
	<b>523.66</b>	3%	8%	12%	20%	25%	30%	38%	44%	49%	54%	69%	<b>96%</b>
2013-14	658.70	17.44	40.81	69.94	99.06	131.56	180.87	218.56	252.18	284.29	328.04	399.82	<b>567.47</b>
	<b>600.00</b>	3%	6%	11%	15%	20%	27%	33%	38%	43%	55%	67%	<b>95%</b>
2014-15	803.15	18.47	38.16	<b>75.87</b>	104.38	159.08	224.94	258.58	309.02	351.54	415.94	499.31	<b>685.32</b>
	<b>*750.00</b>	2%	5%	<b>9%</b>	13%	20%	28%	32%	38%	43%	55%	67%	<b>91%</b>
2015-16	970.00	6.06	31.40	65.08	111.95	163.20	227.77	275.46	332.09	398.90	451.62	<b>553.16</b>	
		1%	3%	7%	12%	17%	23%	28%	34%	41%	50%	<b>61%</b>	
2016-17	1107.00	6.93	41.48	97.68	149.85	<b>214.18</b>							
		0.63%	4%	9%	14%	<b>19%</b>							

**\*Total ADP Allocation (Except Self Finance) in 2016-17 = 1107.00 Billion.**

#### Cumulative ADP Expenditure



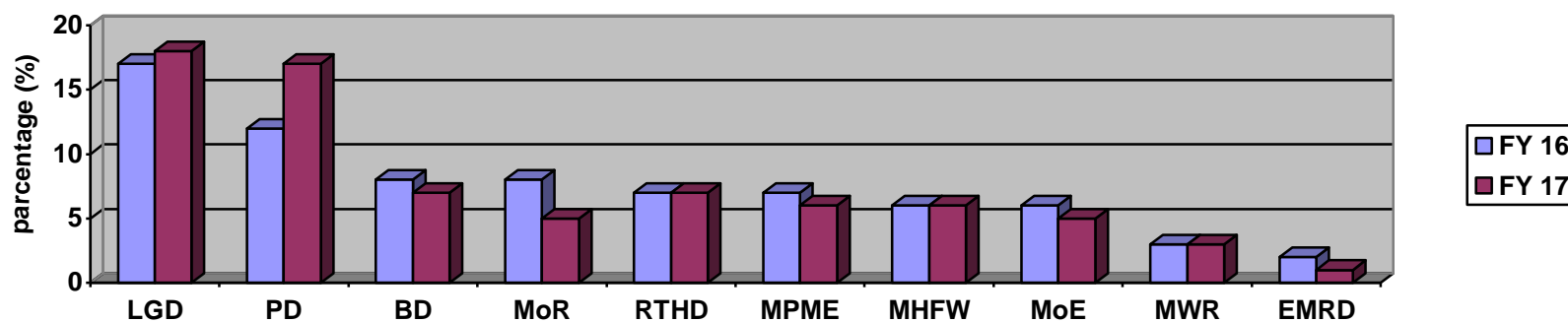
## 2.1 10 Ministries with Highest ADP Allocation in FY 2016-17:

(Taka in Billion)

Sl. No.	Ministry/Division	FY 2015-16		FY 2016-17	
		Allocation	Percentage of Total National Dev. Budget	Allocation	Percentage of Total National Dev. Budget
1.	Local Government Division	167.36	18%	185.48	17%
2.	Power Division	154.76	17%	130.40	12%
3.	Bridges Division	62.53	7%	92.58	8%
4.	Ministry of Railway	46.30	5%	91.15	8%
5.	Road Transport and Highways Division	63.49	7%	81.61	7%
6.	M/O Primary & Mass Education	52.47	6%	77.10	7%
7.	M/O Health and Family Welfare	51.21	6%	62.35	6%
8.	Ministry of Education	42.57	5%	61.67	6%
9.	Ministry of Water Resources	28.61	3%	37.59	3%
10.	Energy & Mineral R. Division	10.68	1%	19.11	2%

**\*Total ADP Allocation (Except Self Finance) in 2016-17 = 1107.00 Billion.**

**Ten Ministries With Highest ADP Allocation in FY 2016-17**



## 2.2 ADP Expenditure (Up to November'16) of Highest ADP Allocated 10 Ministries:

(Taka in Billion)

Sl. No	Ministry/Division	FY 2015-16		FY 2016-17		Change from FY 2015-16 to FY 2016-17 Expenditure +/-	Position according to highest ADP Expenditure among all Ministry/Division
		Up to November'15 ADP Expenditure	% of Total Allocation	Up to November '16 ADP Expenditure	% of Total Allocation		
1.	Power Division	30.39	18%	41.76	<b>32%</b>	+14%	6 <sup>th</sup>
2.	Local Government Division	42.88	25%	48.98	<b>26%</b>	+1%	8 <sup>th</sup>
3.	M/O Primary & Mass Education	10.82	19%	18.43	<b>24%</b>	+5%	14 <sup>th</sup>
4.	Ministry of Railway	7.07	13%	17.79	<b>20%</b>	+7%	19 <sup>th</sup>
5.	Ministry of Education	7.23	17%	9.34	<b>15%</b>	-2%	30 <sup>th</sup>
6.	Energy & Mineral R. Division	1.78	9%	2.87	<b>15%</b>	+6%	31 <sup>th</sup>
7.	Road Transport and Highways Division	8.02	14%	10.96	<b>13%</b>	-1%	32 <sup>st</sup>
8.	Bridges Division	11.13	13%	11.30	<b>12%</b>	-1%	35 <sup>th</sup>
9.	M/O Health and Family Welfare	8.24	15%	7.48	<b>12%</b>	-3%	36 <sup>th</sup>
10.	Ministry of Water Resources	2.98	9%	3.05	<b>8%</b>	-1%	44 <sup>th</sup>

### ADP Expenditure Of Highest ADP Allocation 10 Ministries (Up to November'16)

