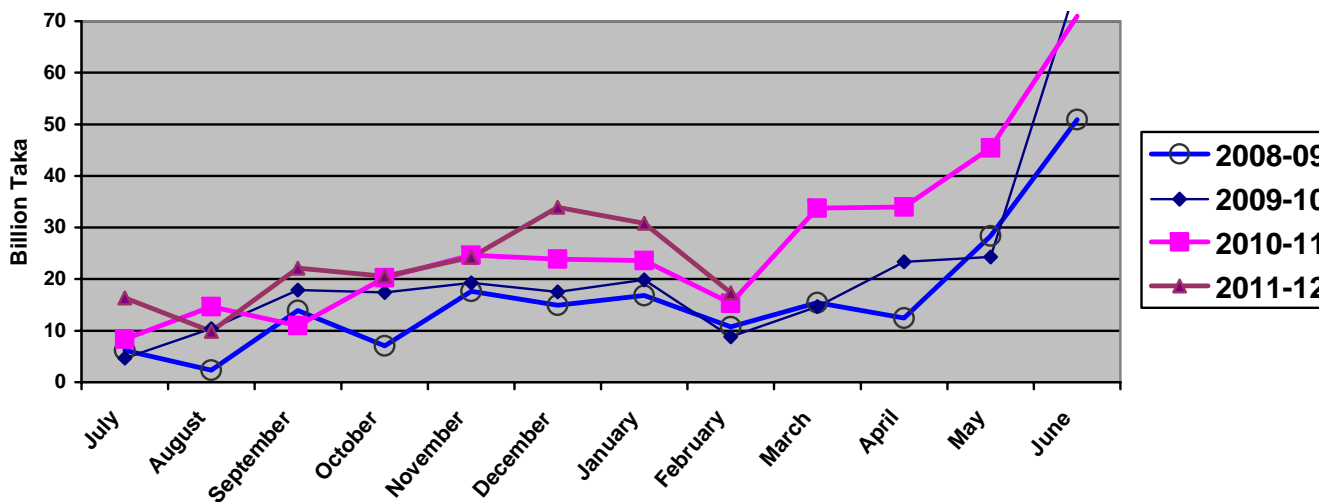


1.1 ADP Allocation and its Expenditure in Different Months (February'12)

(Taka in Billion)

Allocation		Expenditure											
Fiscal year	ADP/RADP	July Amount (%)	August Amount (%)	September Amount (%)	October Amount (%)	November Amount (%)	December Amount (%)	January Amount (%)	February Amount (%)	March Amount (%)	April Amount (%)	May Amount (%)	June Amount (%)
2008-09	256.00	6.21	2.31	13.90	7.07	17.62	14.95	16.79	10.74	15.42	12.43	28.39	50.92
	230.00	(2.4%)	(0.9%)	(5.4%)	(3%)	(7%)	(5.8%)	(6.5%)	(4.2%)	(6.02)	(4.8%)	(12.3%)	(22.1%)
2009-10	305.00	4.66	10.42	17.85	17.4	19.28	17.52	19.86	8.81	14.64	23.35	24.29	77.41
	285.00	2%	3%	6%	6%	6%	6%	7%	3%	5%	8%	9%	27%
2010-11	385.00	8.36	14.64	10.99	20.25	24.66	23.91	23.60	15.31	33.77	34.0	45.40	71.00
	358.80	2%	4%	3%	5%	6%	6%	6%	4%	10%	10%	13%	20%
2011-12	460.00	16.32	9.89	22.14	20.57	24.21	33.90	30.81	17.34				
		4%	2%	5%	4%	5%	7%	7%	(4%)				

Monthwise Comparison of ADP Data



*উৎসঃ ডাটা বেইজ, অর্থ বিভাগ।

1.2 Cumulative ADP Expenditure (July'11- February'12)

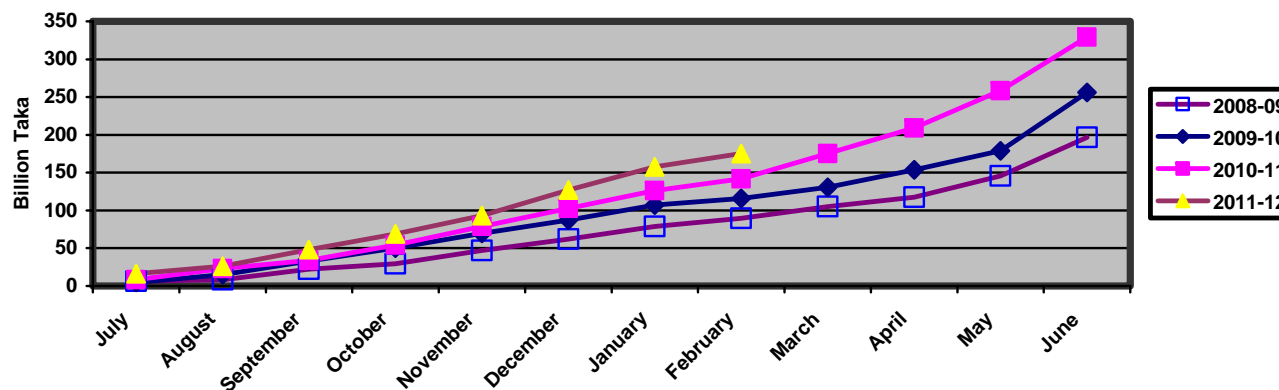
(Taka in Billion)

Allocation		Expenditure											
Fiscal year	ADP/RADP	July Amount (%)	August Amount (%)	September Amount (%)	October Amount (%)	November Amount (%)	December Amount (%)	January Amount (%)	February Amount (%)	March Amount (%)	April Amount (%)	May Amount (%)	June Amount (%)
2008-09	256.00	6.21	8.52	22.42	29.49	47.11	62.06	78.85	89.59	105.01	117.44	145.83	196.75
	230.00	2.4%	(3.3%)	(9 %)	(12%)	(18.5%)	(24.2%)	(31%)	(35%)	(41%)	(46%)	63%	(86%)
2009-10	305.00	4.66	15.08	32.93	50.33	69.61	87.13	106.99	115.80	130.44	153.79	178.71	256.12
	285.00	2%	5%	11%	17%	23%	29%	35%	38%	43%	54%	63%	90%
2010-11	385.00	8.36	23.00	33.99	54.24	78.90	102.81	126.41	141.72	175.09	209.09	258.49	329.49
	358.80	2%	6%	9%	14%	20%	27%	33%	37%	50%	60%	72%	92%
2011-12	460.00	16.32	26.21	48.35	68.92	93.13	127.03	157.84	175.18				
		4%	6%	11%	15%	20%	28%	34%	(38%)				

* Expenditure Shown against ADP from July-April of respective 4 years

** Expenditure Shown against RADP from May-June of respective 3 year

Cumulative ADP Expenditure



*উৎসঃ ডাটা বেইজ, অর্থ বিভাগ।

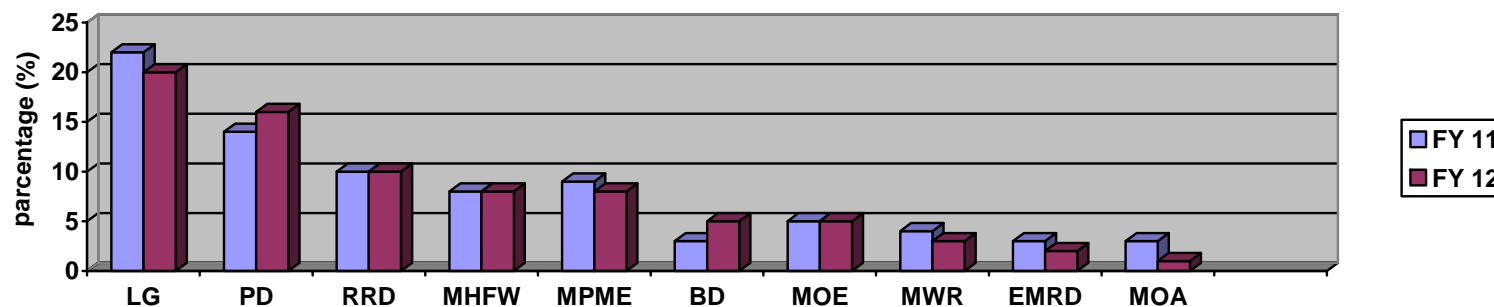
2.1 10 Ministries with Highest ADP Allocation in FY 2011-12:

(Taka in Billion)

Sl. No.	Ministry/Division	FY 2010-11		Current FY 2011-12	
		Allocation	Percentage of Total National Dev. Budget	Allocation	Percentage of Total National Dev. Budget
1.	Local Government Division	77.36	22%	94.05	20%
2.	Power Division	50.17	14%	71.53	16%
3.	Roads and Railway Division	35.04	10%	45.98	10%
4.	M/O Health and Family Welfare	27.36	8%	35.62	8%
5.	M/O Primary & Mass Education	30.57	9%	35.14	8%
6.	Bridges Division	11.06	3%	22.45	5%
7.	Ministry of Education	17.18	5%	21.43	5%
8.	Ministry of Water Resources	14.05	4%	15.07	3%
9.	Energy & Mineral R. Division	10.71	3%	11.14	2%
10.	Ministry of Agriculture	10.48	3%	10.37	1%
	Total:	283.98	81%	362.78	78%

Total ADP Allocation in 2011-12 = 460.00 Billion.

Ten Ministries With Highest ADP Allocation in FY 2011-12



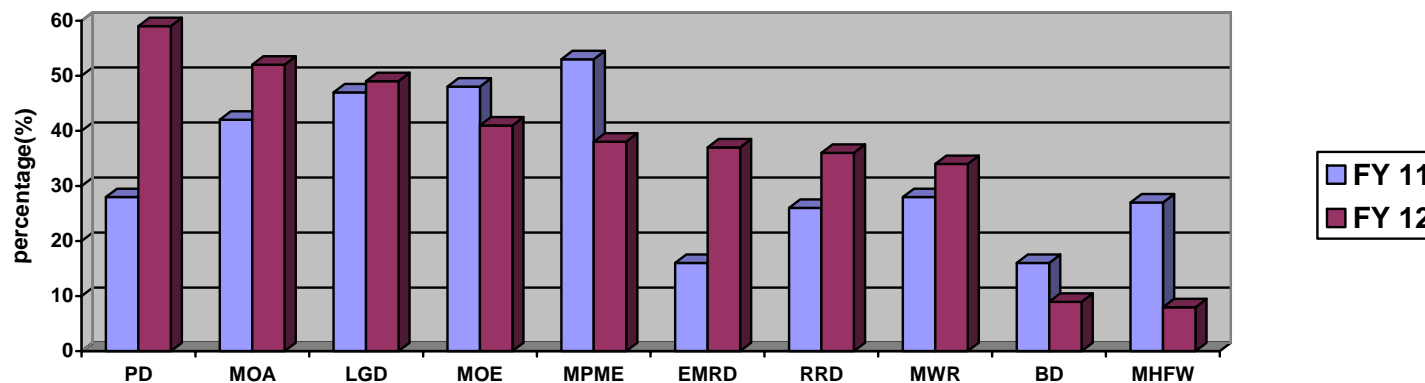
*উৎসঃ ডাটা বেইজ, অর্থ বিভাগ।

2.2 ADP Expenditure (Up to February'2012) of Highest ADP Allocated 10 Ministries:

(Taka in Billion)

Sl. No	Ministry/Division	FY 2010-11		Current FY 2011-12		February '11 to February '12 Expenditure +/-	Position according to highest ADP Expenditure among all Ministry/Division
		Up to February '11 ADP Expenditure	% of Total Allocation	Up to February '12 ADP Expenditure	% of Total Allocation		
1.	Power Division	14.14	28%	42.26	59%	31%	4 th
2.	Ministry of Agriculture	4.50	42%	5.38	52%	10%	6 th
3.	Local Government Division	38.93	47%	45.80	49%	2%	7 th
4.	Ministry of Education	4.19	48%	8.86	41%	-7%	16 th
5.	M/O Primary & Mass Education	16.98	53%	13.31	38%	-15%	22 nd
6.	Energy & Mineral R. Division	1.68	16%	4.05	37%	21%	24 th
7.	Roads and Railway Division	9.08	26%	16.49	36%	10%	25 th
8.	Ministry of Water Resources	3.95	28%	5.09	34%	6%	28 th
9.	Bridges Division	2.09	16%	1.97	9%	-7%	46 th
10.	M/O Health and Family Welfare	9.60	27%	2.99	8%	-19%	47 th

ADP Expenditure Of Highest ADP Allocation 10 Ministries (Up to February '2012)



*উৎসঃ ডাটা বেইজ, অর্থ বিভাগ।