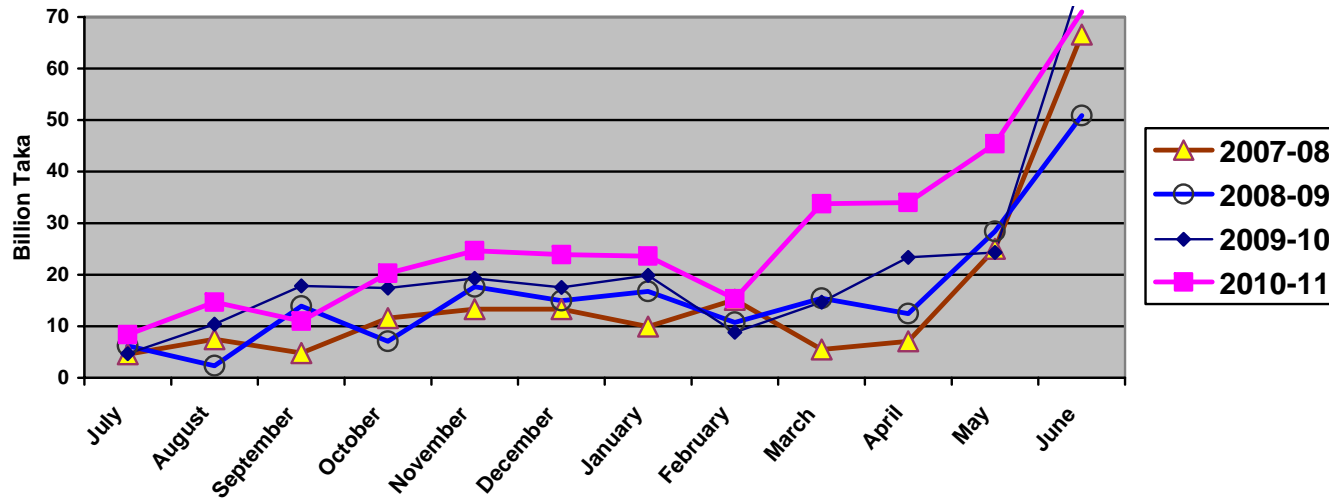


### 1.1 ADP Allocation and its Expenditure in Different Months (July'10-June'11)

(Taka in Billion)

Allocation		Expenditure											
Fiscal year	ADP/RADP	July Amount (%)	August Amount (%)	September Amount (%)	October Amount (%)	November Amount (%)	December Amount (%)	January Amount (%)	February Amount (%)	March Amount (%)	April Amount (%)	May Amount (%)	June Amount (%)
2007-08	265.00 <b>225.00</b>	4.58 (1.7%)	7.49 (2.8%)	4.81 (1.90%)	11.55 (4.4%)	13.33 (5.0%)	13.30 (5.0%)	9.94 (3.8%)	15.12 (5.7%)	5.49 (2.1%)	7.09 (2.7%)	25.00 (11.1%)	66.61 (29.6%)
2008-09	256.00 <b>230.00</b>	6.21 (2.4%)	2.31 (0.9%)	13.90 (5.4%)	7.07 (3%)	17.62 (7%)	14.95 (5.8%)	16.79 (6.5%)	10.74 (4.2%)	15.42 (6.02)	12.43 (4.8%)	28.39 (12.3%)	50.92 (22.1%)
2009-10	305.00 <b>285.00</b>	4.66 2%	10.42 3%	17.85 6%	17.4 6%	19.28 6%	17.52 6%	19.86 7%	8.81 3%	14.64 5%	23.35 8%	24.29 9%	77.41 27%
2010-11	385.00 <b>358.80</b>	8.36 2%	14.64 4%	10.99 3%	20.25 5%	24.66 6%	23.91 6%	23.60 6%	15.31 4%	33.77 10%	34.0 10%	45.40 13%	<b>71.00</b> <b>20%</b>

Monthwise Comparison of ADP Data



\*উৎসঃ ডাটা বেইজ, অর্থ বিভাগ।

## 1.2 Cumulative ADP Expenditure (July'10- June'11)

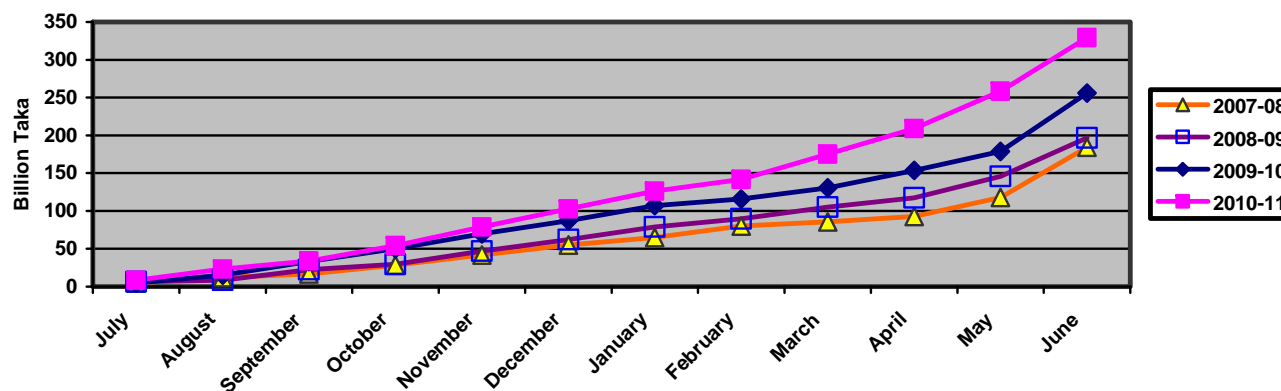
(Taka in Billion)

Allocation		Expenditure											
Fiscal year	ADP/ RADP	July Amount (%)	August Amount (%)	September Amount (%)	October Amount (%)	November Amount (%)	December Amount (%)	January Amount (%)	February Amount (%)	March Amount (%)	April Amount (%)	May Amount (%)	June Amount (%)
2007-08	265.00 <b>225.00</b>	4.58 (1.5%)	12.07 (4.5%)	16.88 (6.4%)	28.43 (10.7%)	41.76 (15.8%)	55.06 (20.7%)	65.00 (24.5%)	80.12 (30.23%)	85.61 (32.3%)	92.70 (35.0)	117.70 (52.3%)	184.31 (81.9%)
2008-09	256.00 <b>230.00</b>	6.21 2.4%	8.52 (3.3%)	22.42 (9%)	29.49 (12%)	47.11 (18.5%)	62.06 (24.2%)	78.85 (31%)	89.59 (35%)	105.01 (41%)	117.44 (46%)	145.83 63%	196.75 (86%)
2009-10	305.00 <b>285.00</b>	4.66 2%	15.08 5%	32.93 11%	50.33 17%	69.61 23%	87.13 29%	106.99 35%	115.80 38%	130.44 43%	153.79 54%	178.71 63%	<b>256.12</b> <b>90%</b>
2010-11	385.00 <b>358.80</b>	8.36 2%	23.00 6%	33.99 9%	54.24 14%	78.90 20%	102.81 27%	126.41 33%	141.72 37%	175.09 50%	209.09 60%	258.49 72%	<b>329.49</b> <b>92%</b>

\* Expenditure Shown against ADP from July-April of respective 4 years

\*\* Expenditure Shown against RADP from May-June of respective 3 year

Cumulative ADP Expenditure



\*উৎসঃ ডাটা বেইজ, অর্থ বিভাগ।

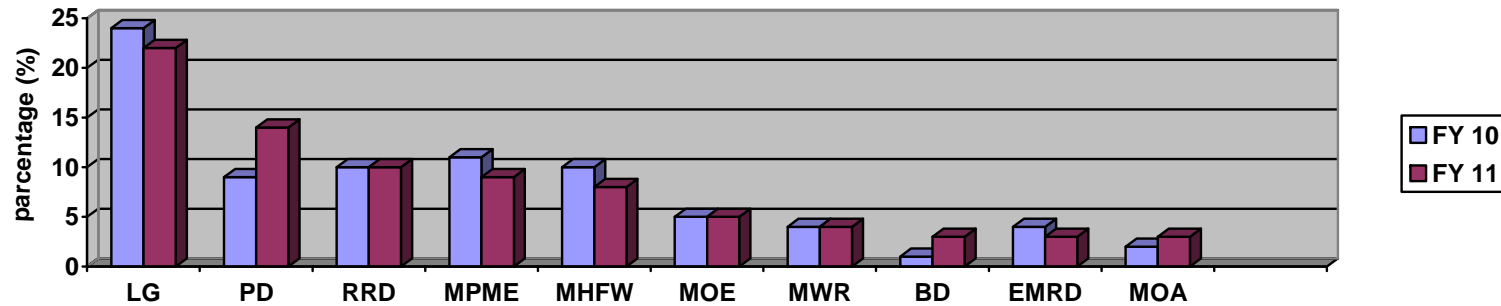
## 2.1 10 Ministries with Highest RADP Allocation in FY 2010-11:

(Taka in Billion)

Sl. No.	Ministry/Division	FY 2009-10		Current FY 2010-11	
		Allocation	Percentage of Total National Dev. Budget	Allocation	Percentage of Total National Dev. Budget
1.	Local Government Division	69.57	24 %	77.36	22%
2.	Power Division	26.58	9 %	50.17	14%
3.	Roads and Railway Division	30.30	11 %	35.04	10%
4.	M/O Primary & Mass Education	28.23	10 %	30.57	9%
5.	M/O Health and Family Welfare	28.29	10 %	27.36	8%
6.	Ministry of Education	14.30	5 %	17.18	5%
7.	Ministry of Water Resources	12.54	4 %	14.05	4%
8.	Bridges Division	3.85	1 %	11.06	3%
9.	Energy & Mineral R. Division	10.92	4 %	10.71	3%
10.	Ministry of Agriculture	5.36	2 %	10.48	3%
	<b>Total:</b>	<b>235.53</b>	<b>82 %</b>	<b>283.98</b>	<b>81%</b>

Total RADP Allocation in 2010-11 = 358.80 Billion.

### Ten Ministries With Highest ADP Allocation in FY 2009-10



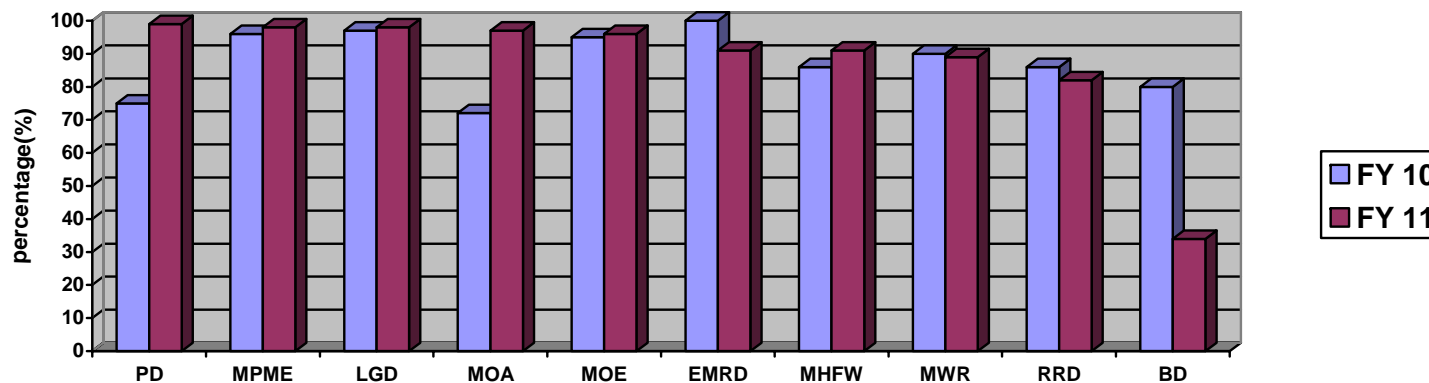
\*উৎসঃ ডাটা বেইজ, অর্থ বিভাগ।

## 2.2 RADP Expenditure (Up to June '2011) of Highest ADP Allocated 10 Ministries:

(Taka in Billion)

Sl. No	Ministry/Division	FY 2009-10		Current FY 2010-11		June '10 to June'11 Expenditure +/-	Position according to highest ADP Expenditure among all Ministry/Division
		Up to June '10 ADP Expenditure	% of Total Allocation	Up to June '11 ADP Expenditure	% of Total Allocation		
1.	Power Division	19.95	75%	59.13	<b>99%</b>	24%	3 <sup>rd</sup>
2.	M/O Primary & Mass Education	27.16	96%	29.79	<b>98%</b>	2%	8 <sup>th</sup>
3.	Local Government Division	67.52	97%	75.75	<b>98%</b>	1%	9 <sup>th</sup>
4.	Ministry of Agriculture	6.77	72%	10.20	<b>97%</b>	25%	10 <sup>th</sup>
5.	Ministry of Education	13.56	95%	16.41	<b>96%</b>	1%	16 <sup>th</sup>
6.	Energy & Mineral R. Division	13.67	100%	9.70	<b>91%</b>	-9%	19 <sup>th</sup>
7.	M/O Health and Family Welfare	24.40	86%	24.89	<b>91%</b>	5%	23 <sup>rd</sup>
8.	Ministry of Water Resources	11.33	90%	12.83	<b>89%</b>	-1%	28 <sup>th</sup>
9.	Roads and Railway Division	26.13	86%	29.69	<b>82%</b>	-4%	38 <sup>th</sup>
10.	Bridges Division	3.08	80%	3.79	<b>34%</b>	-46%	49 <sup>th</sup>

ADP Expenditure Of Highest ADP Allocation 10 Ministries (Up to June '2011)



\*উৎসঃ ডাটা বেইজ, অর্থ বিভাগ।