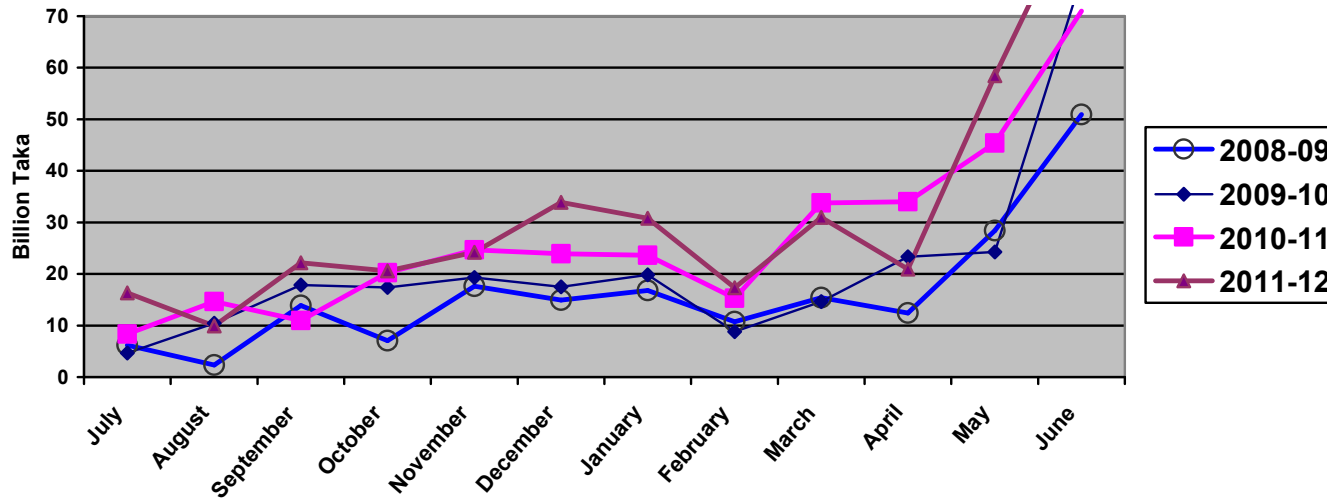


### 1.1 ADP Allocation and its Expenditure in Different Months (June'12)

(Taka in Billion)

Allocation		Expenditure											
Fiscal year	ADP/RADP	July Amount (%)	August Amount (%)	September Amount (%)	October Amount (%)	November Amount (%)	December Amount (%)	January Amount (%)	February Amount (%)	March Amount (%)	April Amount (%)	May Amount (%)	June Amount (%)
2008-09	256.00	6.21	2.31	13.90	7.07	17.62	14.95	16.79	10.74	15.42	12.43	28.39	50.92
	<b>230.00</b>	(2.4%)	(0.9%)	(5.4%)	(3%)	(7%)	(5.8%)	(6.5%)	(4.2%)	(6.02)	(4.8%)	(12.3%)	(22.1%)
2009-10	305.00	4.66	10.42	17.85	17.4	19.28	17.52	19.86	8.81	14.64	23.35	24.29	77.41
	<b>285.00</b>	2%	3%	6%	6%	6%	6%	7%	3%	5%	8%	9%	27%
2010-11	385.00	8.36	14.64	10.99	20.25	24.66	23.91	23.60	15.31	33.77	34.0	45.40	71.00
	<b>358.80</b>	2%	4%	3%	5%	6%	6%	6%	4%	10%	10%	13%	20%
2011-12	460.00	16.32	9.89	22.14	20.57	24.21	33.90	30.81	17.34	30.99	20.92	58.44	93.19
	<b>410.80</b>	4%	2%	5%	4%	5%	7%	7%	(4%)	7%	5%	14%	23%

Monthwise Comparison of ADP Data



\*উৎসঃ ডাটা বেইজ, অর্থ বিভাগ।

## 1.2 Cumulative ADP Expenditure (July'11- June'12)

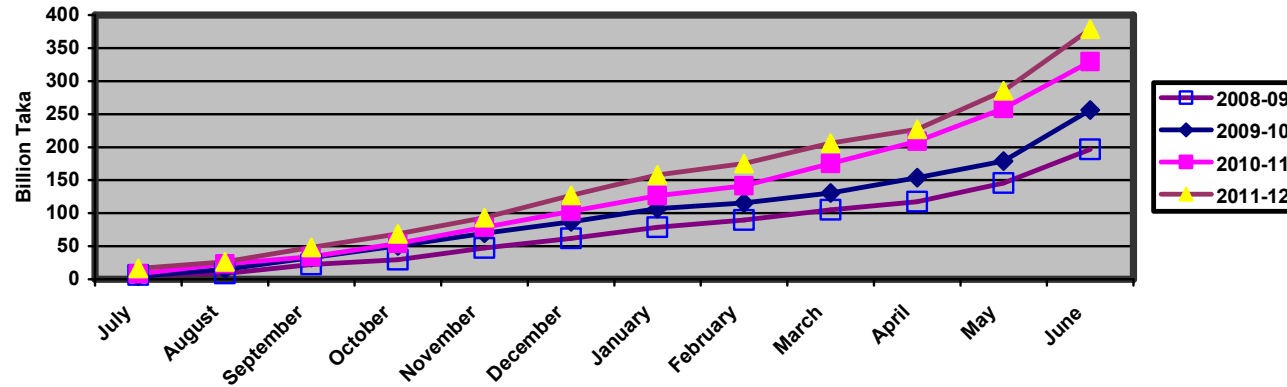
(Taka in Billion)

Allocation		Expenditure											
Fiscal year	ADP/RADP	July Amount (%)	August Amount (%)	September Amount (%)	October Amount (%)	November Amount (%)	December Amount (%)	January Amount (%)	February Amount (%)	March Amount (%)	April Amount (%)	May Amount (%)	June Amount (%)
2008-09	256.00	6.21	8.52	22.42	29.49	47.11	62.06	78.85	89.59	105.01	117.44	145.83	196.75
	<b>230.00</b>	2.4%	(3.3%)	(9%)	(12%)	(18.5%)	(24.2%)	(31%)	(35%)	(41%)	(46%)	63%	(86%)
2009-10	305.00	4.66	15.08	32.93	50.33	69.61	87.13	106.99	115.80	130.44	153.79	178.71	<b>256.12</b>
	<b>285.00</b>	2%	5%	11%	17%	23%	29%	35%	38%	43%	54%	63%	<b>90%</b>
2010-11	385.00	8.36	23.00	33.99	54.24	78.90	102.81	126.41	141.72	175.09	209.09	258.49	<b>329.49</b>
	<b>358.80</b>	2%	6%	9%	14%	20%	27%	33%	37%	45%	60%	72%	<b>92%</b>
2011-12	460.00	16.32	26.21	48.35	68.92	93.13	127.03	157.84	175.18	206.17	227.09	285.53	<b>378.72</b>
	<b>410.80</b>	4%	6%	11%	15%	20%	28%	34%	38%	45%	55%	70%	<b>92%</b>

\* Expenditure Shown against ADP from July-April of respective 4 years

\*\* Expenditure Shown against RADP from May-June of respective 3 year

Cumulative ADP Expenditure



\*উৎসঃ ডাটা বেইজ, অর্থ বিভাগ।

## 2.1 10 Ministries with Highest ADP Allocation in FY 2011-12:

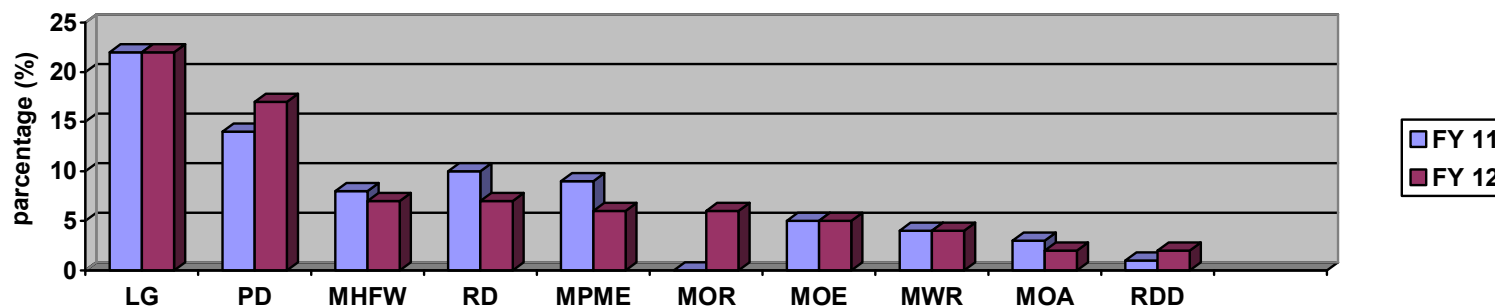
(Taka in Billion)

Sl. No.	Ministry/Division	FY 2010-11		Current FY 2011-12	
		Allocation	Percentage of Total National Dev. Budget	Allocation	Percentage of Total National Dev. Budget
1.	Local Government Division	77.36	22%	88.96	22%
2.	Power Division	50.17	14%	71.86	17%
3.	M/O Health and Family Welfare	27.36	8%	30.36	7%
4.	*Roads Division	*35.04	10%	28.47	7%
5.	M/O Primary & Mass Education	30.57	9%	24.60	6%
6.	Ministry of Railway	-	-	22.66	6%
7.	Ministry of Education	17.18	5%	19.76	5%
8.	Ministry of Water Resources	14.05	4%	15.44	4%
9.	Ministry of Agriculture	10.48	3%	10.21	2%
10.	Rural Development Division	4.61	1%	8.11	2%

**Total RADP Allocation in 2011-12 = 410.80 Billion.**

**\*For FY 2010-11, Allocation for Roads & Railways Division is shown.**

### Ten Ministries With Highest ADP Allocation in FY 2011-12



\*উৎসঃ ডাটা বেইজ, অর্থ বিভাগ।

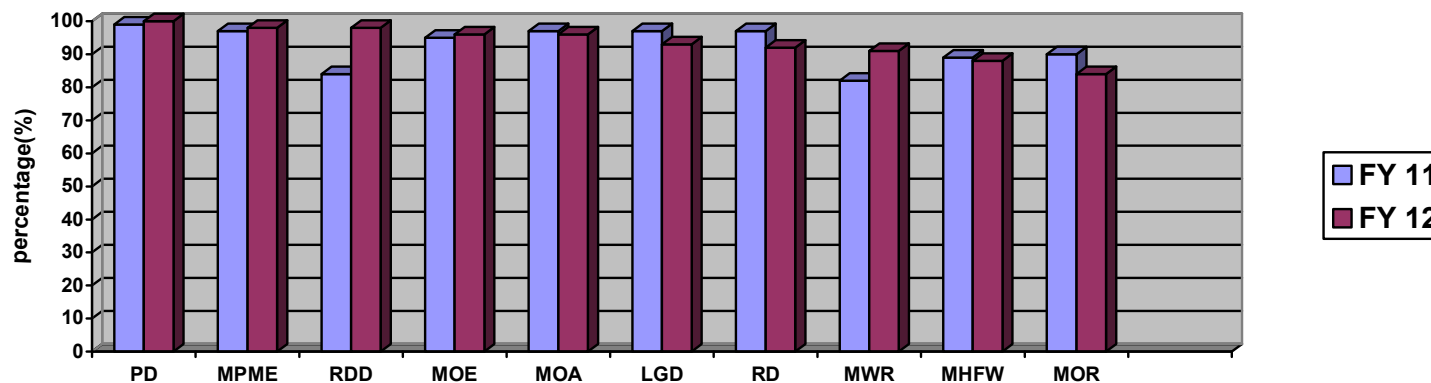
## 2.2 ADP Expenditure (Up to June'2012) of Highest ADP Allocated 10 Ministries:

(Taka in Billion)

Sl. No	Ministry/Division	FY 2010-11		Current FY 2011-12		June '11 to June '12 Expenditure +/-	Position according to highest ADP Expenditure among all Ministry/Division
		Up to June '11 ADP Expenditure	% of Total Allocation	Up to June '12 ADP Expenditure	% of Total Allocation		
1.	Power Division	59.12	99%	71.57	<b>100%</b>	1%	6 <sup>th</sup>
2.	M/O Primary & Mass Education	29.78	97%	24.17	<b>98%</b>	1%	10 <sup>th</sup>
3.	Rural Development Division	3.85	84%	7.95	<b>98%</b>	14%	13 <sup>th</sup>
4.	Ministry of Education	16.41	95%	19.05	<b>96%</b>	1%	17 <sup>th</sup>
5.	Ministry of Agriculture	10.20	97%	9.82	<b>96%</b>	-1%	18 <sup>th</sup>
6.	Local Government Division	75.75	97%	82.28	<b>93%</b>	-4%	25 <sup>th</sup>
7.	*Roads Division	*29.69	82%	26.20	<b>92%</b>	10%	27 <sup>th</sup>
8.	Ministry of Water Resources	12.82	89%	14.09	<b>91%</b>	2%	28 <sup>th</sup>
9.	M/O Health and Family Welfare	24.89	90%	26.61	<b>88%</b>	-2%	37 <sup>th</sup>
10.	Ministry of Railway	*	-	19.08	<b>84%</b>	-	41 <sup>st</sup>

\*For FY 2010-11, Expenditure for Roads & Railways Division is shown.

**ADP Expenditure Of Highest ADP Allocation 10 Ministries (Up to June '2012)**



\*উৎসঃ ডাটা বেইজ, অর্থ বিভাগ।