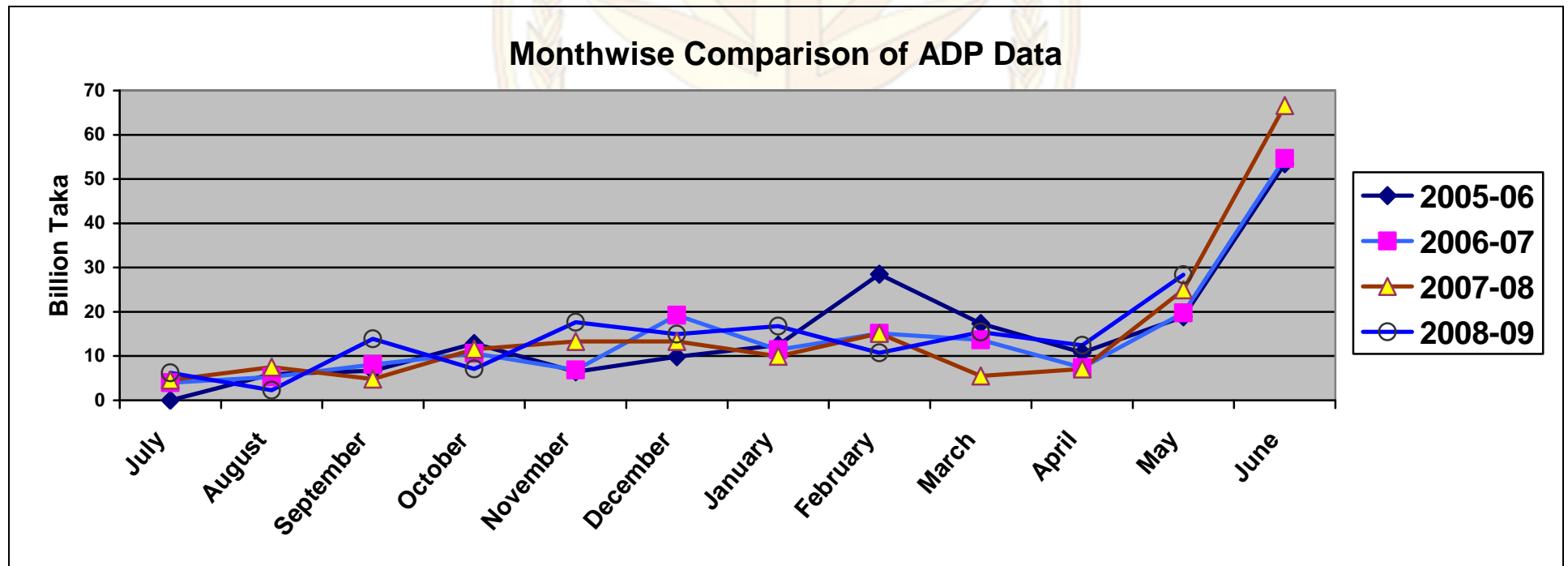


### 1.1 ADP Allocation and its Expenditure in Different Months (July'08-May'09)

(Taka in Billion)

Allocation		Expenditure											
Fiscal year	ADP/ RADP	July Amount (%)	August Amount (%)	September Amount (%)	October Amount (%)	November Amount (%)	December Amount (%)	January Amount (%)	February Amount (%)	March Amount (%)	April Amount (%)	May Amount (%)	June Amount (%)
2005-06	245.00 <b>215.00</b>	- (-)	5.95 (2.4%)	6.66 (2.7%)	12.81 (5.2%)	6.45 (2.6%)	9.84 (4.0%)	12.46 (5.1%)	28.48 (11.6%)	17.35 (7.1%)	10.80 (4.4%)	18.87 (8.8%)	53.47 (24.8%)
2006-07	260.00 <b>216.00</b>	3.97 (1.5%)	5.25 (2.1%)	8.07 (3.1%)	10.63 (4.0%)	6.86 (2.63%)	19.21 (7.4%)	11.43 (4.0%)	15.12 (5.8%)	13.68 (5.3%)	7.37 (2.8%)	19.73 (9.1%)	54.62 (25.3%)
2007-08	265.00 <b>225.00</b>	4.58 (1.7%)	7.49 (2.8%)	4.81 (1.90%)	11.55 (4.4%)	13.33 (5.0%)	13.30 (5.0%)	9.94 (3.8%)	15.12 (5.7%)	5.49 (2.1%)	7.09 (2.7%)	25.00 (11.1%)	66.61 (29.6%)
2008-09	256.00 <b>230.00</b>	6.21 (2.4%)	2.31 (0.9%)	13.90 (5.4%)	7.07 (3%)	17.62 (7%)	14.95 (5.8%)	16.79 (6.5%)	10.74 (4.2%)	15.42 (6.02)	12.43 (4.8%)	<b>28.39</b> <b>(12.3%)</b>	

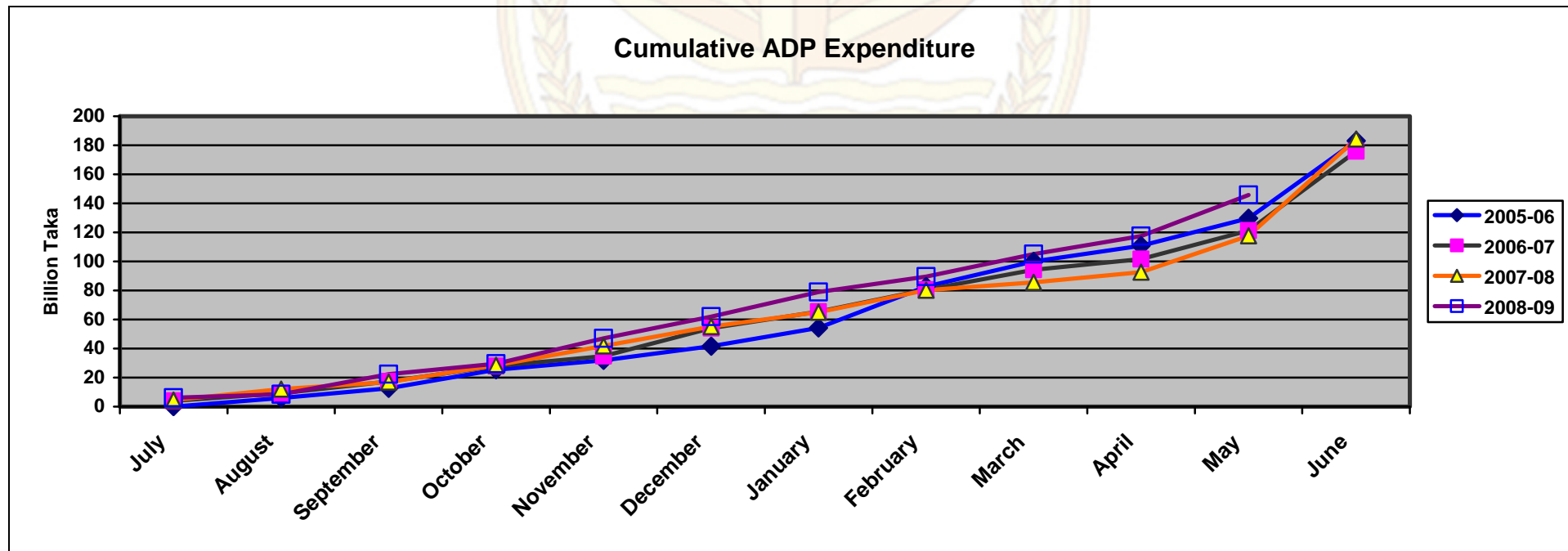


## 1.2 Cumulative ADP Expenditure (July'08- May'09)

Allocation		Expenditure											
Fiscal year	ADP/ RADP	July Amount (%)	August Amount (%)	September Amount (%)	October Amount (%)	November Amount (%)	December Amount (%)	January Amount (%)	February Amount (%)	March Amount (%)	April Amount (%)	May Amount (%)	June Amount (%)
2005-06	245.00 <b>215.00</b>	- (-)	5.95 (2.4%)	12.61 (5.1%)	25.42 (10.4%)	31.87 (13.0%)	41.71 (17.0%)	54.17 (22.1%)	82.65 (33.7%)	100.00 (40.8%)	110.80 (45.2%)	129.67 (60.3%)	183.14 (85.2%)
2006-07	260.00 <b>216.00</b>	3.97 (1.5%)	9.22 (3.5%)	17.29 (6.7%)	27.92 (10.7%)	34.78 (13.3%)	53.99 (20.7%)	65.42 (25.2%)	80.54 (30.9%)	94.22 (36.2%)	101.59 (39.1%)	121.32 (56.2%)	175.94 (81.5%)
2007-08	265.00 <b>225.00</b>	4.58 (1.5%)	12.07 (4.5%)	16.88 (6.4%)	28.43 (10.7%)	41.76 (15.8%)	55.06 (20.7%)	65.00 (24.5%)	80.12 (30.23%)	85.61 (32.3%)	92.70 (35.0)	117.70 (52.3%)	184.31 (81.9%)
2008-09	256.00 <b>230.00</b>	6.21 2.4%	8.52 (3.3%)	22.42 (9 %)	29.49 (12%)	47.11 (18.5%)	62.06 (24.2%)	78.85 (31%)	89.59 (35%)	105.01 (41%)	117.44 (46%)	<b>145.83</b> <b>63%</b>	

\* Expenditure Shown against ADP from July-April of respective 4 years

\*\* Expenditure Shown against RADP from May-June of respective 3 year

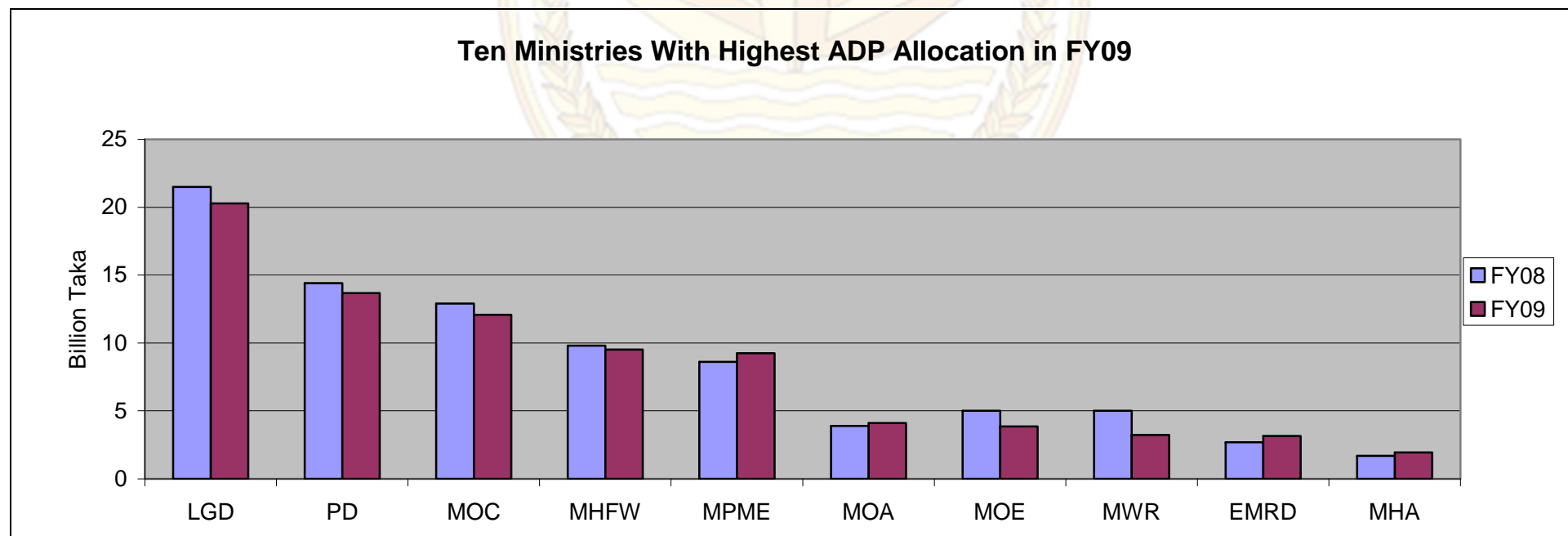


## 2.1 10 Ministries with Highest ADP Allocation in FY 2008-09:

(Taka in Billion)

Sl. No.	Ministry/Division	FY 2007-08		Current FY 2008-09	
		Allocation	Percentage of Total National Dev. Budget	Allocation	Percentage of Total National Dev. Budget
1.	Local Government Division	50.37	22.38%	52.20	<b>22.70%</b>
2.	Power Division	30.97	13.76%	26.77	<b>11.64%</b>
3.	M/O Health and Family Welfare	23.63	10.50%	26.15	<b>11.37%</b>
4.	M/O Primary & Mass Education	18.86	8.38%	21.14	<b>9.19%</b>
5.	Ministry of Communication	23.56	10.47%	19.12	<b>8.31%</b>
6.	Ministry of Education	10.00	4.44%	9.86	<b>4.29%</b>
7.	Ministry of Water Resources	9.38	4.16%	8.81	<b>3.83%</b>
8.	Ministry of Agriculture	7.48	3.32%	7.75	<b>3.37%</b>
9.	M/O Housing & Public Works	4.59	2.04%	7.12	<b>3.09%</b>
10.	Ministry of Home Affairs	3.29	1.46%	4.61	<b>2.00%</b>
<b>Total:</b>		<b>182.13</b>	<b>80.91%</b>	<b>183.46</b>	<b>79.76%</b>

**Total RADP Allocation in 2008-09 = 230.00 Billion.**



## 2.2 ADP Expenditure (Up to May'2009) of Highest ADP Allocated 10 Ministries:

(Taka in Billion)

Sl. No	Ministry/Division	FY 2007-08		Current FY 2008-09		May '08 to May '09 Expenditure +/-	Position according to highest ADP Expenditure among all Ministry/Division
		Up to May '08 ADP Expenditure	% of Total Allocation	Up to May '09 ADP Expenditure	% of Total Allocation		
1.	M/O Housing & Public Works	1.28	70.0%	6.45	<b>90.7%</b>	20.7%	2 <sup>th</sup>
2.	Local Government Division	28.31	56.2%	42.63	<b>81.7%</b>	25.5%	5 <sup>th</sup>
3.	Ministry of Agriculture	7.11	95.0%	5.78	<b>74.7%</b>	-20.3%	9 <sup>th</sup>
4.	M/O Home Affairs	0.78	23.7%	3.39	<b>73.7%</b>	50.0%	12 <sup>th</sup>
5.	M/O Primary & Mass Education	11.11	58.9%	15.47	<b>73.2%</b>	14.3%	13 <sup>th</sup>
6.	Ministry of Education	5.55	55.5%	7.11	<b>72.2%</b>	16.7%	14 <sup>th</sup>
7.	Power Division	16.57	53.5%	16.11	<b>60.2%</b>	6.7%	20 <sup>th</sup>
8.	M/O Health and Family Welfare	15.00	63.5%	13.98	<b>53.5%</b>	-10.0%	29 <sup>th</sup>
9.	Ministry of Water Resources	3.86	41.2%	4.54	<b>51.6%</b>	10.4%	30 <sup>th</sup>
10.	Ministry of Communication	10.96	46.5%	8.84	<b>46.2%</b>	-0.3%	34 <sup>th</sup>
<b>Total:</b>		<b>100.53</b>	<b>44.68%</b>	<b>124.3</b>	<b>54.04%</b>	<b>9.36%</b>	

### ADP Expenditure of Highest ADP Allocated 10 Ministries (Up to May '2009)

