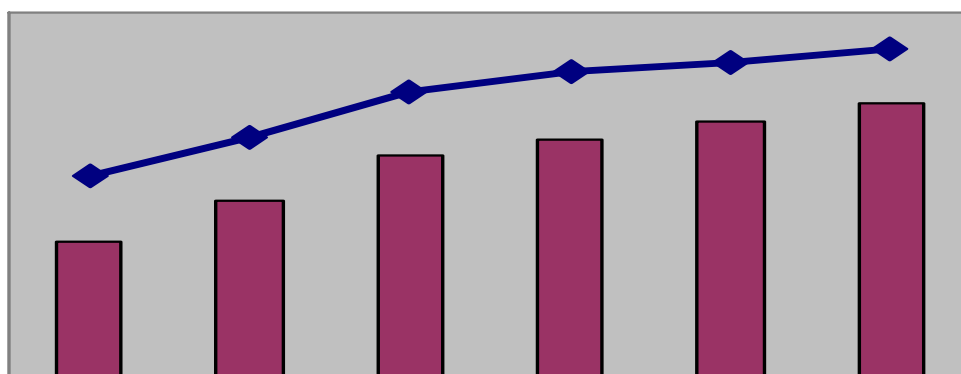


MONTHLY FISCAL-MACRO UPDATE

JANUARY, 2009



Prepared by:

Economic Adviser's Wing

Finance Division

This issue is contributed by

Dipak Kumar Sarkar, Senior Assistant Chief, Finance Division.

Guided by:

Dr. Mohammad Tareque

Secretary

Finance Division

Ministry of Finance

Issue-1, Year: 2009

As on March 25, 2009

MONTHLY FISCAL-MACRO UPDATE

A. FISCAL SECTOR

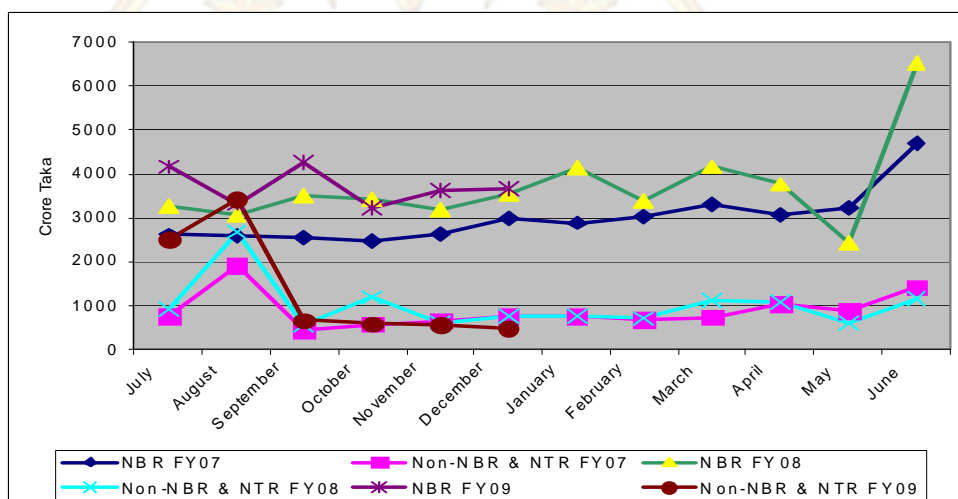
a.1 Revenue Earnings

(in crore Tk.)

Fiscal Year	Tax Revenue		Non-Tax Revenue	Total Revenue
	NBR	Non-NBR		
2006-07	36172.1	1854.7	8779.7	46806.6
2007-08	45777.0	2313.0	10080.0	58170.0
Growth (%)	26.6	24.7	14.8	24.3
2008-09				
December	3676.3	151.7	341.1	4169.1
July- December	22272.3	1198.8	7046.2	30517.3
Growth over July- Dec., FY 08	(11.2%)	(26.0%)	(20.0%)	(13.7%)

Source: Integrated Budgeting & Accounting System (iBAS), Finance Division.

Chart 1: Monthly Trend of Revenue earnings (FY07-FY09)



- Up to December, FY09 growth in revenue (13.7%) continues.
- NBR Tax revenue growth up to December FY 09 is 11.2 percent.
- Non-NBR Tax revenue growth up to December FY 09 is 26.0 percent.
- Dividend and profit mainly contributes growth (20.0%) in Non-Tax revenue.

a.2 Grants

(in crore Tk.)

2006-07	2007-08	Growth (%)	2008-09		
			December	July- Dec.	Growth over July- Dec., FY 08
1037.4	2007.4	93.50	180.8	356.6	42.61%

Source: Integrated Budgeting & Accounting System (iBAS), Finance Division.

MONTHLY FISCAL-MACRO UPDATE

a.3 Government Expenditure

(in crore Tk.)

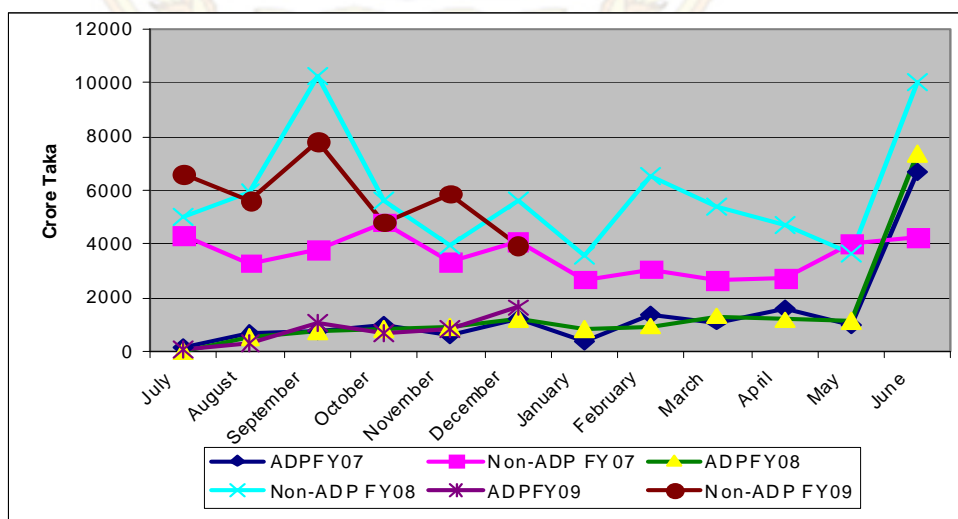
	2006-07	2007-08	Growth (%)	2008-09	
				December	July- December
1. Current	40867.9	49992.0	22.34	4448.8	25547.3 (11.76%)
Interest	9403.4	12461.9	32.53	1095.86	6880.35 (7.12%)
Domestic	8063.1	11063.4	37.21	978.90	6181.66 (7.36%)
Foreign	1340.3	1398.5	4.34	116.96	698.69 (5.09%)
Subsidies & Current Transfer	12228.0	17758.2	45.23	1694.58	9550.07 (29.02%)
2. ADP	16833.0	17067.5	7.60	1638.1	4709.0 (13.16%)
3. Non-ADP Capital Exp. & Net lending	2782.7	-5671.7	-230.09	102.5	2135.0 (-74.05%)
4. Net Outlay on Food A/C	388.0	2192.0	1401.37	765.0	2152.0 (123.47%)
5. Extraordinary Exp	32.2	788.3	2348.14	0.00	0.00
6. Check float	222.3	20452.8	1635.9	-1403.5	4702.8 (23.04%)
Total (1+2+3)	59932.0	84821.1	41.53	5566.9	39262.1 (-3.38%)

Source: Integrated Budgeting & Accounting System (iBAS), Finance Division. Figures in parentheses indicate growth over July-December, FY 08

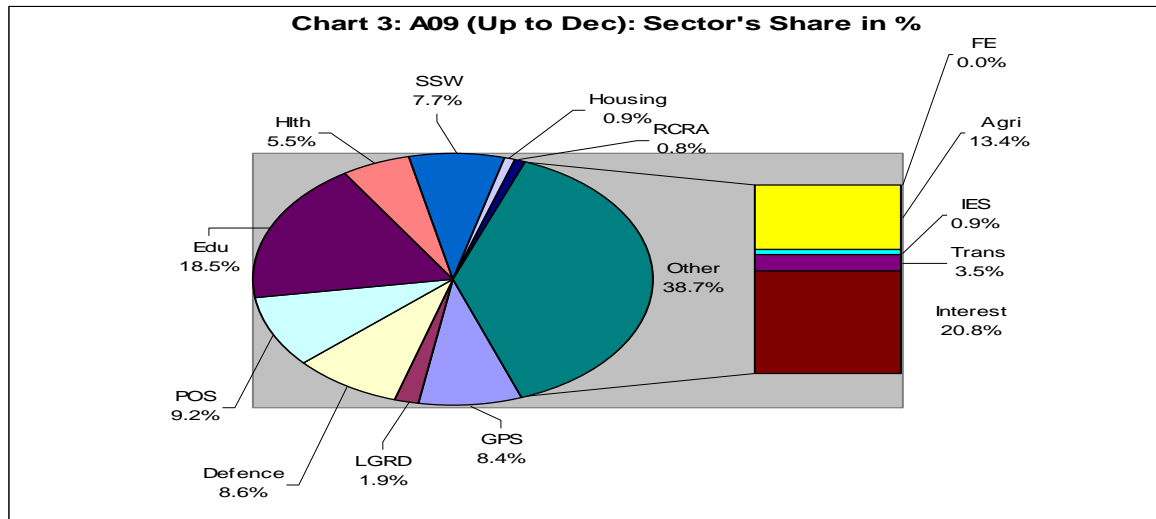
Up to December, FY 09,

- Current expenditure records a growth (growth: 11.76%), of which
 - Subsidies and transfer (growth: 29.02%)
 - Interest payments (growth: 7.12%).

Chart 2: Monthly Trend of ADP and Non-ADP Expenditure (FY 07-FY09)



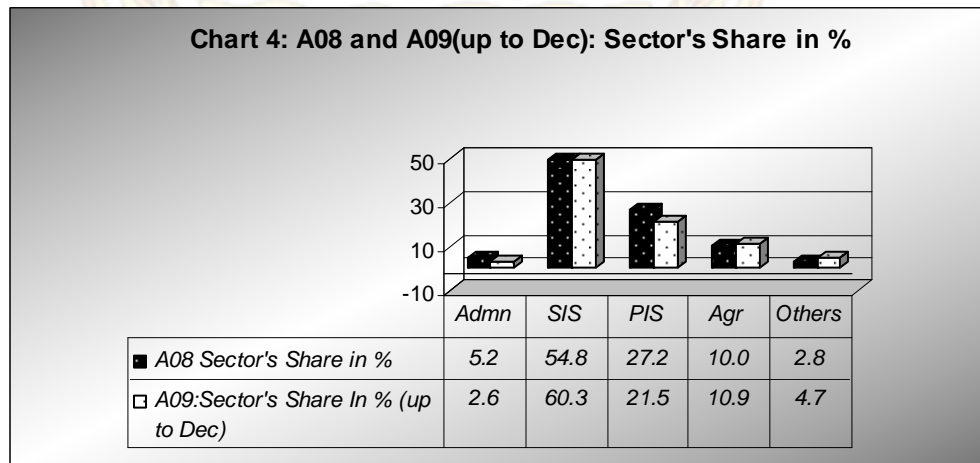
a.3.1 Structure of Revenue Expenditure



GPS = General Public Services, LGRD = LGD, RD & Cooperatives, CHTs, POS = Public Order and Safety, Edu = Education and Technology, Hlth = Health, SSW = Social Security and Welfare, RCRA = Recreation, Culture and Religious Affairs, Agri = Agriculture, Fisheries and Livestock, Land, Water Resources and Food, FE = Fuel and Energy, IES = Industries, Jute, Textiles, Commerce, Labor & Overseas, Trans = Transport and Communication

- Sector wise revenue expenditure shows that highest expenditure is in Interest payment (20.8%), Education (18.5%), and Agriculture (13.4%).

a.3.2 Structure of ADP Expenditure



Admn = General Public Services, Defence, and Public Order and Safety, SIS = Social Infrastructure, covers Edu, health, Housing and SSW & LGRD. PIS = Physical Infrastructure, covers FE and Trans; and Others include RCRA and IES

- Sector wise ADP expenditure shows that, up to December highest share are in Social Infrastructure (60.3%) and next highest expenditure is in Physical Infrastructure (21.5%).

a.4 Budget Deficit

(in crore Tk.)

	Overall Balance	Overall Balance as % of GDP
2006-07	-13125.4	-2.8
2007-08	-26650.9 (including BPC) -19328.4 (excluding BPC)	-4.9(including BPC) -3.5(excluding BPC)
2008-09		
December	-1397.8	-2.9
Up to December	-8744.8	-3.0

Source: Integrated Budgeting & Accounting System (iBAS), Finance Division.

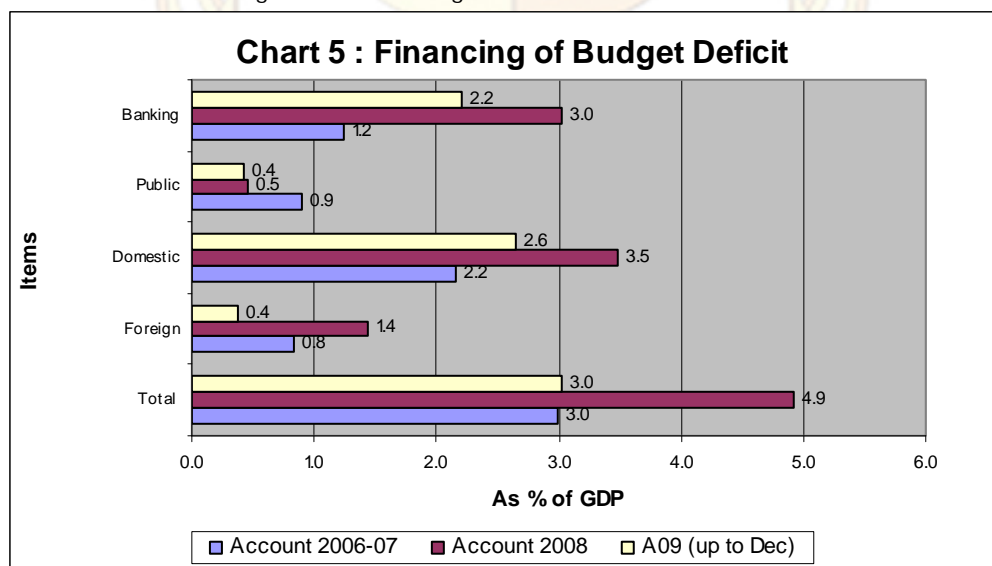
a.5 Deficit Financing

(in crore Tk.)

	External (net)	Domestic		Total Financing	Financing as % of GDP
		Bank	Non-Bank		
2006-07	2790.0	5982.3	4353.1	13125.4	2.8
2007-08	7775.5	16349.3*	2526.1	26650.9*	4.9*
		9026.7**		19328.4**	3.5**
2008-09					
December	971.3	254.7	171.8	1397.8	2.9
Up to Dec.	1100.3	6347.6	1296.9	8744.8	3.0

Source: Integrated Budgeting & Accounting System (iBAS), Finance Division.

* including BPC ** excluding BPC



MONTHLY FISCAL-MACRO UPDATE

a.5 Net Sales of NSD Certificates

(in crore Tk.)

	Sales	Repayment	Net Sale	Outstanding at the end of period
2006-07	15123.53	10948.61	4174.92	43639.18
2007-08	14105.79	11587.50	2518.29	46157.47
Growth	-6.73%	+5.83%	-39.68%	+5.77%
2008-09				
January	1492.96	1087.68	405.28	47781.65
July- January (Growth over July- Jan. FY 08)	8120.38 (1.05%)	6496.20 (-4.36%)	1624.18 (30.60%)	47781.65 (6.46%)

Source: National Savings Directorate.

- In the first seven months of FY09, there is a huge growth in net sale (30.60%) compared to the same period of the previous fiscal year.

A. MONETARY SECTOR

b.1 Monetary and credit development

(in crore Tk.)

	Outstanding Stock at the end of period				
	2006-07	2007-08	Growth	2008-09 (January ^p)	Growth(%) over January, FY08
Net Foreign Asset	32888.40	37845.40	15.07	34615.70	8.11
Net Domestic Asset	179097.80	210949.50	18.10	237673.00	21.75
Domestic credit	204267.60	248767.80	20.95	272928.70	19.53
Public Sector	53495.40	58632.00	9.60	66345.50	15.33
Govt. (net)	36040.00	46999.60	30.41	52956.30	22.50
Other Public Sector	17455.40	11632.40	-33.36	13389.20	-6.36
Private Sector	150772.20	190135.80	24.94	206583.20	20.94
Broad Money	211986.20	248794.90	17.63	272288.70	19.83

Source: Bangladesh Bank. p. Provisional

- At the end of January, 2009 broad money growth stands to 19.83 percent.
- Growth in Net Foreign Asset is 8.11 percent.
- Share of Net Foreign Asset in M₂ is 12.71 percent.
- There has been higher growth in Govt. (net) (22.50%).
- Strong growth in private sector credit (20.94%) continues.

MONTHLY FISCAL-MACRO UPDATE

b.2 Reserve money and money multiplier

	Outstanding Stock at the end of period				
	2006-07	2007-08	Change	2008-09 (January)	Change over January FY08
Reserve money	44073.1	52789.60	19.78 %	58900.00	27.88
Reserve Money multiplier	4.80	4.71	-0.09	4.62	-0.31

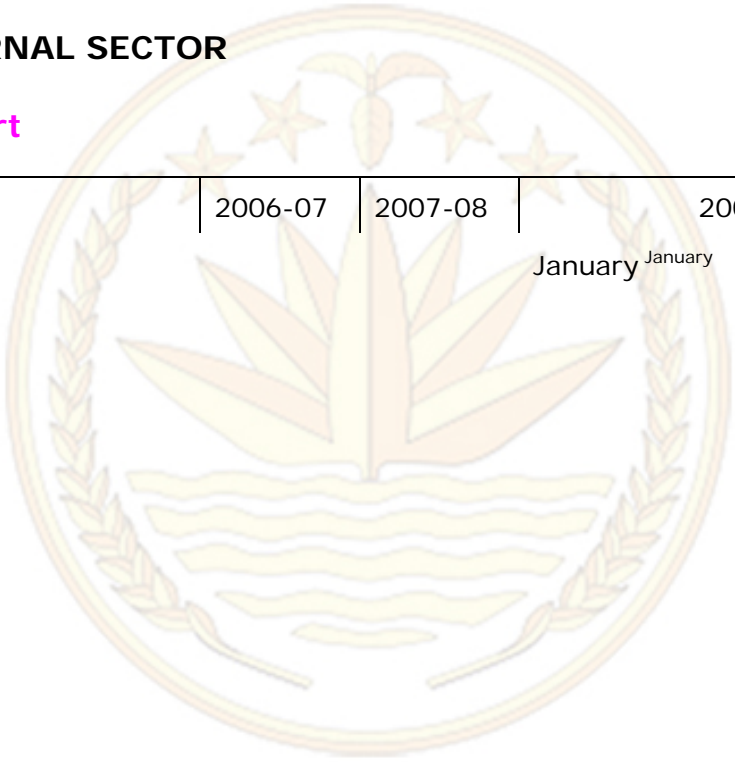
Source: Bangladesh Bank.

B. EXTERNAL SECTOR

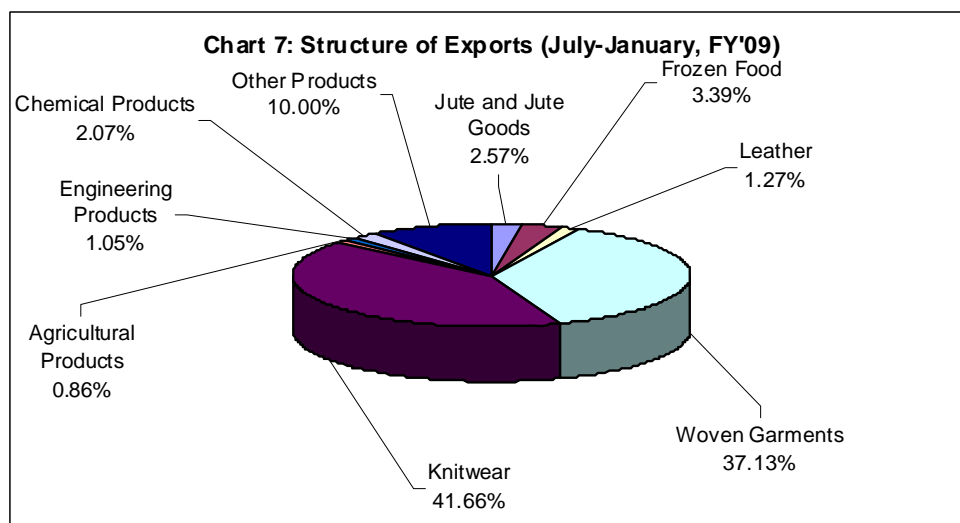
c.1 Export

(in million US\$)

	2006-07	2007-08	2008-09
			January January



c.1.1 Structure of Exports



- Strong growth in export is mainly due to increase in Knitwear (26.17%), Woven Garments (20.59%) and Chemical products (84.24%).
- Exports of engineering products, Leather, Raw Jute & Jute goods and Frozen food declined by 19.91 percent, 31.82 percent, 18.31percent and 5.54 percent respectively.

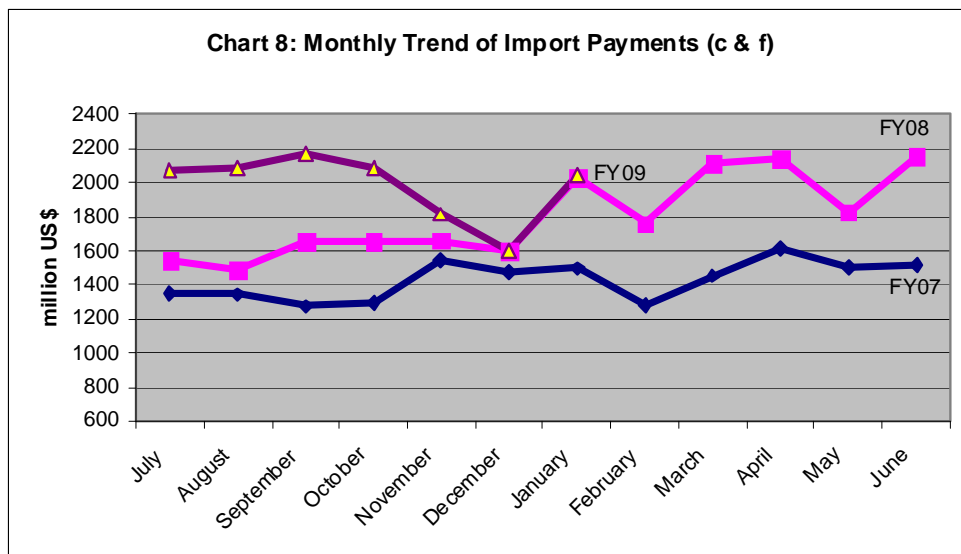
c.2 Imports (c&f)

(in million US\$)

	2006-07	2007-08	2008-09 ^P	
			January	July- January
Import payments	17156.80	21629.00	2046.20	13877.70
Growth (%)	16.35	26.07	0.91	19.35
LCs Opened	17451.01	24435.61	1583.20	12759.85
Growth (%)	14.47	40.02	-32.08	-2.25
LCs Settled	15971.35	20372.60	1999.25	13114.64
Growth (%)	14.49	27.56	6.63	19.73

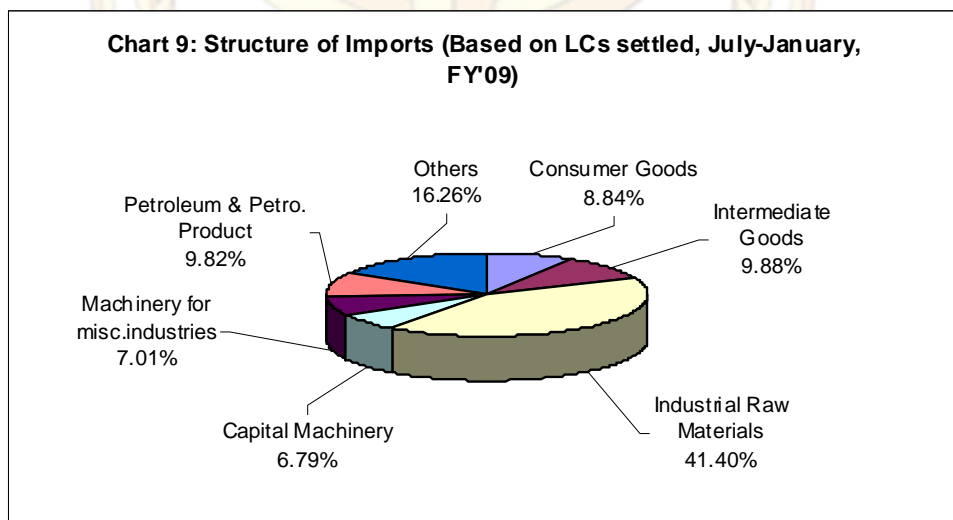
Source: Bangladesh Bank.

p-provisional ; Growth rate (in percent) over the same period of the previous fiscal year.



- In the fiscal year 2007-08, the import sector records massive growth of 26.07 percent.
- Up to first seven months of FY09 import payments increased by 19.35 percent compared to the same period of the previous fiscal year.

C.2.1 Structure of Imports (Based on LCs settled)



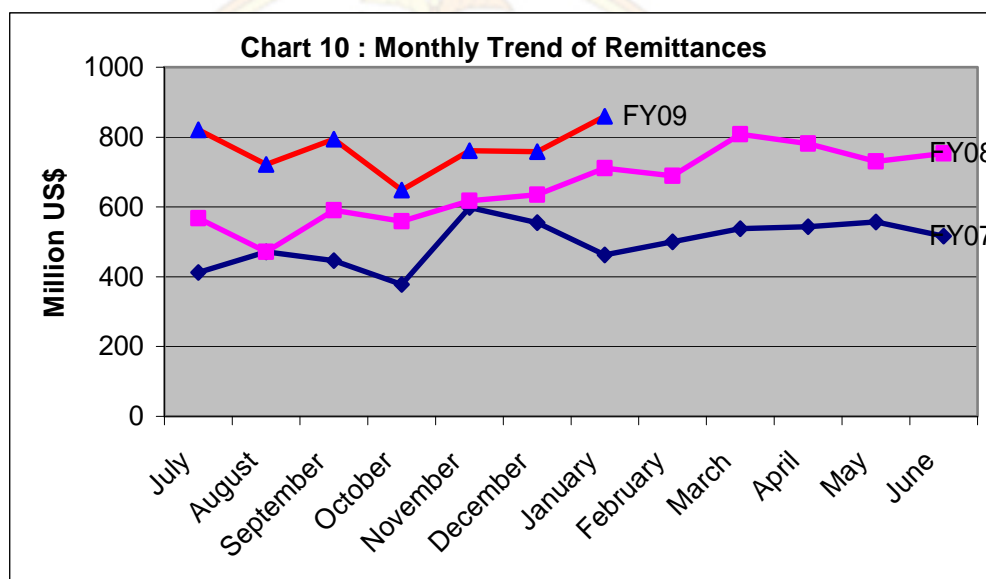
- Up to January, FY'09 import of consumer goods recorded a decrease of 23.98 percent.
- Import of intermediate goods increased by 70.70 percent.
- Import growth of industrial raw materials is 28.95 percent.
- Growth in capital machinery and machinery for misc. industry recorded an increase of 12.11 percent.

c.3 Remittances

(in million US\$)

	2006-07	2007-08	2008-09	
			January	July- January
Remittances	5978.47	7914.78	859.00	5363.73
Growth ^a (%)	24.50	32.39	20.86	29.21
As % of GDP	8.83	10.02	-	-
As % of Export	49.09	56.09	-	-

Source: Bangladesh Bank. p. provisional, - indicates data are not available

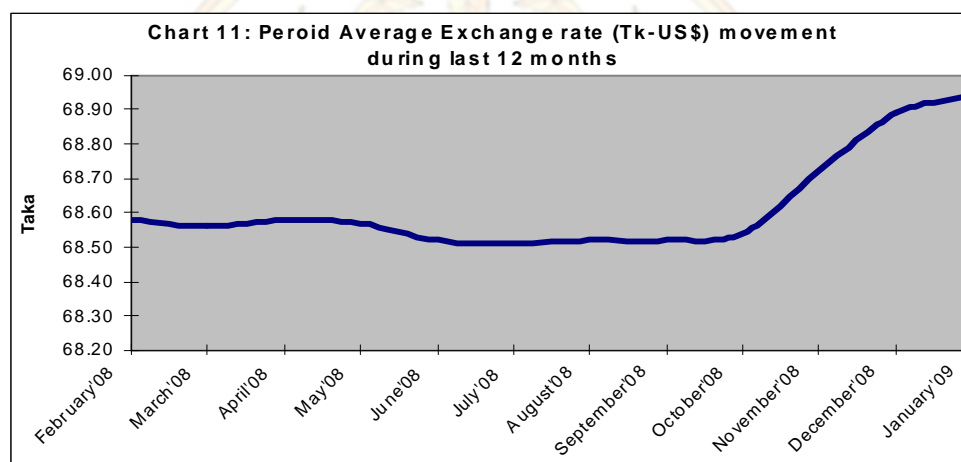


- In FY 08 remittances inflow records a robust growth of 32.39 percent.
- In FY08 remittances as percent of GDP and Export were 10.02 percent and 56.09 percent respectively which are relatively higher than previous fiscal year.
- Up to January, FY 09 remittances inflow records a growth of 29.21 percent.

c.4 Exchange Rate Movement

	Average	End of the period
2006-07	69.03	68.80
2007-08	68.60	68.52
2008-09		
July	68.5107	68.5189
August	68.5181	68.5200
September	68.5167	68.5150
October	68.5431	68.6450
November	68.7172	68.8000
December	68.8887	68.9350
January	68.9378	68.9000

Source: Bangladesh Bank.



- Slight depreciation of taka at January, 2009 against US dollar compared to the same period of the previous year.

c.5 Foreign Exchange Reserve

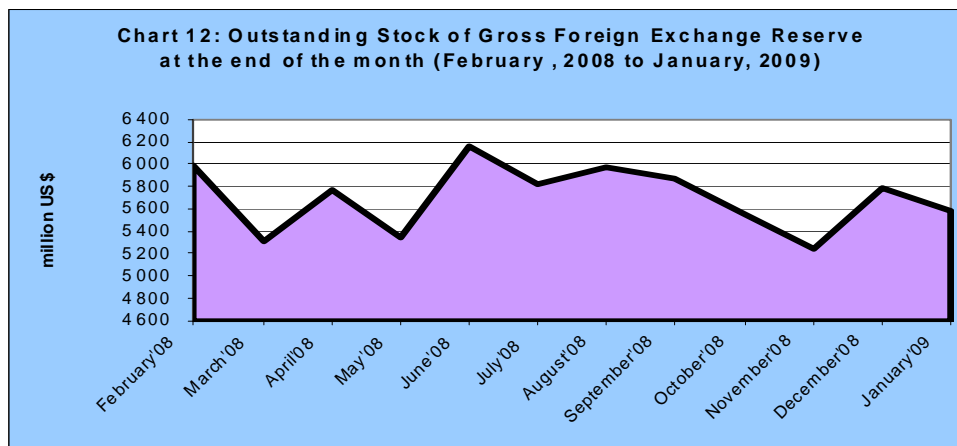
(in million US\$)

	2005-06	2006-07	As on end of January, 2009
Reserve	3483.78	5077.24	5577.12
in month of import payment	2.83	3.55	2.8

Source: Bangladesh Bank.

- On the basis of import payment in the first seven months of FY 09 the foreign exchange reserve (end January) is equivalent to 2.8 months import payments.

MONTHLY FISCAL-MACRO UPDATE

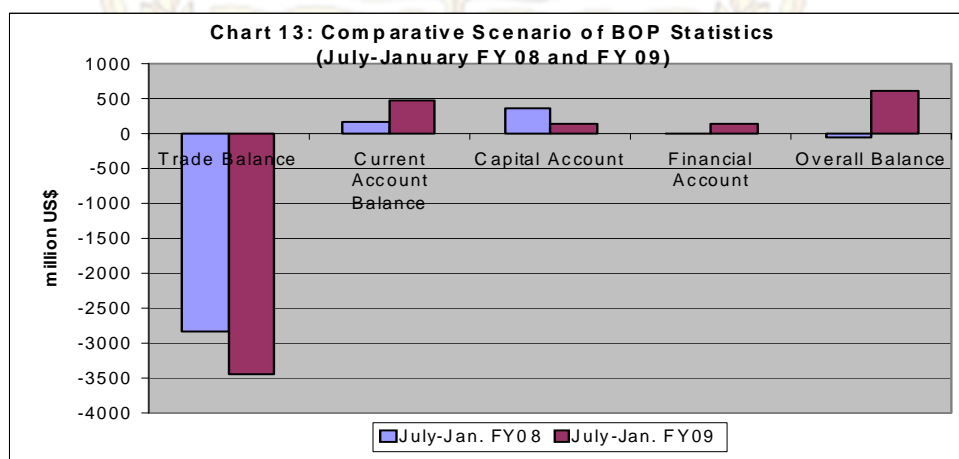


c.6 Balance of Payments

(in million US\$)

	2006-07	2007-08 ^p	2007-08 (July-January)	2008-09 ^p (July-Jan.)
Trade Balance	-3458	-5541	-2838	-3451
Current Account Balance	936	672	168	464
Capital Account	490	576	346	140
Financial Account	762	-431	-11	130
Overall Balance	1493	604	-45	618

Source: Bangladesh Bank. p- provisional



- Current account balance records a surplus of 464 million US\$ in the first seven months of FY 09, which was a surplus of 168 million US\$ in the same period of the previous fiscal year.
- Compare to FY 07, in FY 08 trade gap widens significantly due to the larger increase in import.

A. REAL SECTOR

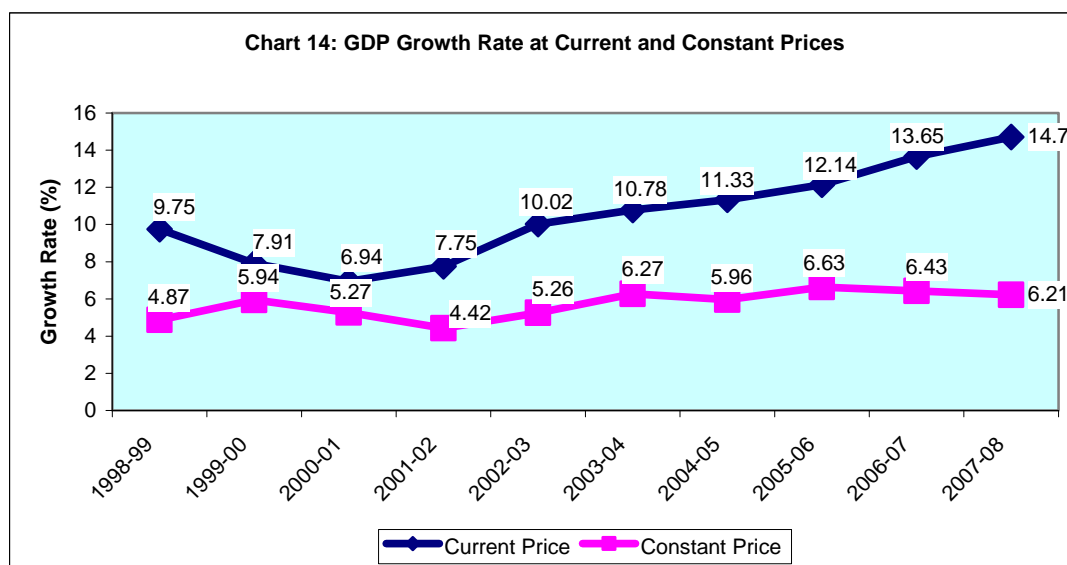
d.1 Gross Domestic Product

(Crore Taka)

	2004-05	2005-06	2006-07	2007-08 ^P
GDP at constant prices	266974	284673	302971	321786
Growth (%)	5.96	6.63	6.43	6.21
Agriculture	2.21	4.94	4.56	3.61
Industry	8.28	9.74	8.38	6.87
Service	6.36	6.40	6.92	6.69
GDP at current prices	370707	415728	472477	541919
Growth (%)	11.33	12.14	13.65	14.70
GNI at current prices	389635	442935	507752	585318
Per capita GDP (Tk.)	27061	29955	33607	38056
Per capita GNI (Tk.)	28443	31915	36116	41103
Per capita GDP (US\$)	441	447	487	554
Per capita GNI (US\$)	463	476	523	599

Source: Bangladesh Bureau of Statistics. P- Provisional.

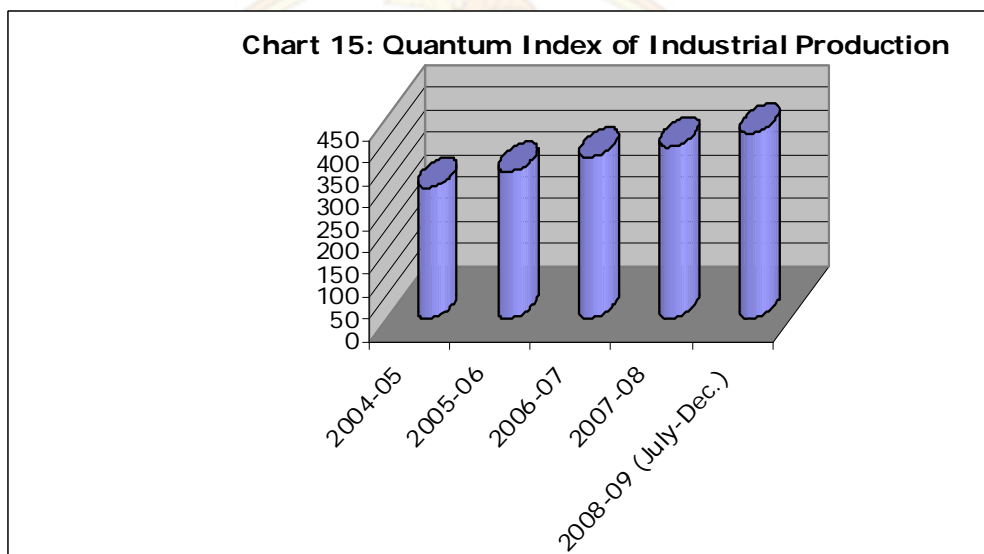
- Real GDP growth in FY 08 provisionally estimated to be 6.21 percent of which
 - Growth in Agriculture has been estimated at 3.61 percent
 - Growth in Industry is estimated 6.87 percent
 - Service sector growth is estimated at 6.69 percent.
- Per capita GDP in FY 08 exceeded US\$ 500 mark and reached to US\$ 554.



d.2 Quantum Index of Industrial Production (Large and Medium Scale Manufacturing Industry, Base: 1988-89=100)

FY	Index	Growth Rate
2005-06	328.35	11.41
2006-07	360.33	9.74
2007-08	384.82	6.80
2007-08 ^P		
December	415.82	2.83
July- December (Average)	406.68	8.94

Source: BBS

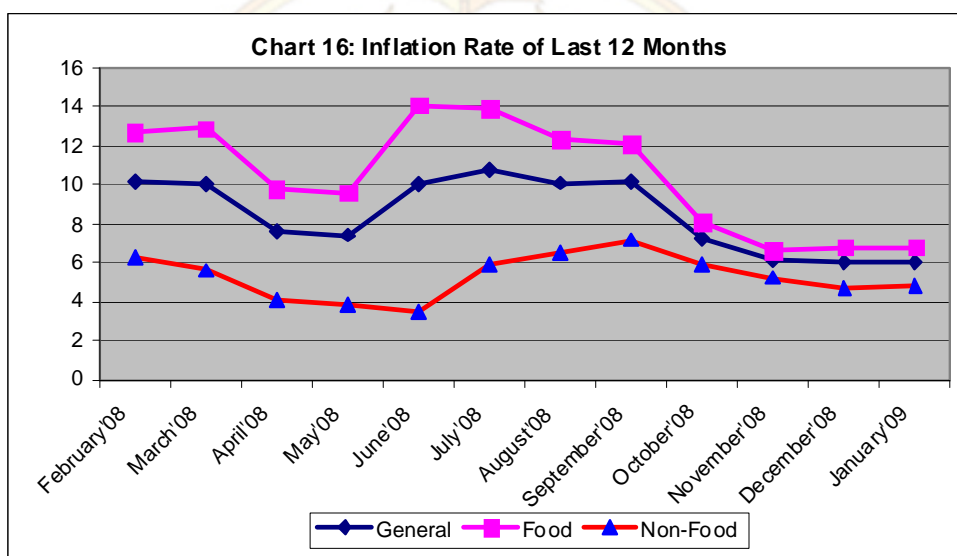


- The growth rate of the Quantum Index of Industrial Production (Large and Medium Scale Manufacturing Industry) is 9.74 percent in FY 07 which was 11.41 percent in FY 06.
- In FY 08, the average index is 384.82 which is 6.80 percent higher compared to the same period of FY 07.
- In the first half of FY 09, the average index is 415.82 which is 8.94 percent higher compared to the same period of FY 08.

d.3 Consumer Price Index and Inflation (National)

FY	CPI (General)	Point to Point Inflation		
		General	Food	Non-Food
2005-06	164.21	7.17	7.76	6.40
2006-07	176.06	7.22	8.12	5.90
2007-08	193.54	9.93	12.28	6.32
2008-09				
July	206.86	10.82	13.92	5.93
August	207.27	10.11	12.36	6.55
September	210.14	10.19	12.07	7.19
October	209.31	7.26	8.08	5.95
November	207.14	6.12	6.68	5.25
December	204.90	6.03	6.83	4.76
January	204.04	6.06	6.83	4.88

Source: Bangladesh Bureau of Statistics.



- In FY08 the average rate of inflation recorded at 9.93 percent.
- There has been a decreasing trend in the second quarter of the FY 09.
- In January, 2009 the CPI come down to 204.04 and the rate of inflation was 6.06 percent. The food and non-food inflation were 6.83 percent and 4.88 percent respectively.